



Lloyd Godman

# ARCHITECTURAL SITES

Design and layout copyright - © Photo-syn-thesis 2018  
Applicable text copyright © Lloyd Godman  
Photographs copyright © Lloyd Godman

All right reserved. No part of this publication may be reproduced, stored in a retrieval system, or transmitted in any form or means, electronic, mechanical, photocopying, recording or otherwise, without prior permission of the publisher - please email for permission.

Published by Photo-syn-thesis - 2018



[lloydgodman@gmail.com](mailto:lloydgodman@gmail.com)



mob. 0448188899



<https://www.instagram.com/lloydgodman/>



<https://www.facebook.com/atmocycle>



<https://twitter.com/atmomachine>



[www.lloydgodman.net](http://www.lloydgodman.net)

## Why this book is offered as interactive PDF.

Ebooks are ePub or MOBI files that are specifically built for ereaders. The text in these are reflowable, and redistribute to fill the screen. Readers of these files can adjust font size, typeface, and other viewing options. Just like a web page, ebooks are based on HTML. Ebooks do not have page numbers, so do not reference them in the text. Instead they indicate with references like, "in the next section/chapter/ or at the end of the book." These books cannot be printed by the user. Ebooks are seen as the best file option for something with a great amount of text on an ereader, like a Kindle, a Nook, a Kobo reader, a tablet, an iPod, a phone, etc. Because screens can be small, viewing a PDF requires readers to zoom and navigate to read the content, by manually moving the page from left to right to read it all. An ebook, with its reflowable text, provides a much better reading experience. Most major ebook retailers do not allow you to upload a PDF.

A PDF is not a true ebook. Yes, they are electronic, and so are often thought of as an electronic "book," but they are designed to display a hard print-type document that has a fixed layout. So, PDFs will retain the page design and look the same no matter what device you view them on, from a tiny phone to a tablet or computer screen, where as an ebook will scramble the design. For this reason PDFs are excellent where a precise graphic design is required that incorporates complex graphics, images and text. However, when viewing enlarged content you will need to scroll across the screen. Also, while PDF file sizes are higher, they retain the quality of higher resolution files, offer interactively, sound files and video. Both formats are constantly under development. The ability to print from a PDF file can be enabled. This PDF file is print enabled which means a printed copy can be made from the PDF file.

## DONATE \$1 to help this archival documentation

You can make a contribution of a \$1 or more via Paypal simply make a donation to [lloydgodman@gmail.com](mailto:lloydgodman@gmail.com)

Documenting the extensive range of projects is a labour of love and has taken years. While the archive now offers all projects FREE, any support offered is most welcome.

## GODMAN projects is offered in two versions

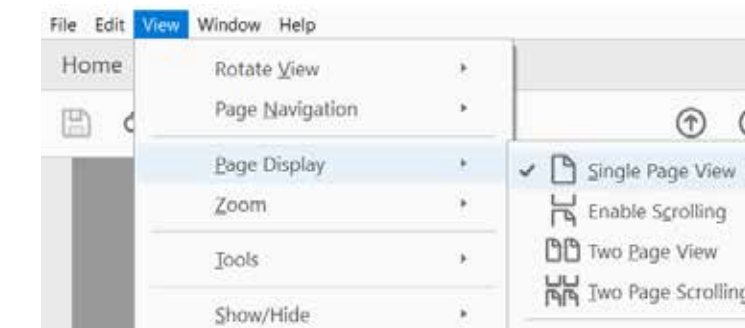
A free or PWYW downloadable non-interactive low resolution series of PDFs.

- Pay what you want (or PWYW, also referred to as "Value-for-Value model") is a pricing strategy where buyers pay their desired amount for a given commodity, sometimes including zero. The payment can reflect their income and may also include a % as a donation to support further Ebook projects. When you purchase a copy, you become a valued supporter of the project which allows further Volumes to be compiled.

You can make a contribution of a \$1 or more via Paypal simply make a donation to [lloydgodman@gmail.com](mailto:lloydgodman@gmail.com)

- A high resolution interactive series of PDFs which allows the viewer to navigate a document, from document to document and to relevant web links. It Allows the viewer to enjoy the full quality of the images, activate sound and video files. You can purchase a copy of over 30 projects and index for \$30 Aust downloadable as dropbox files or as a DVD.

**To order email [lloydgodman@gmail.com](mailto:lloydgodman@gmail.com)**



# ACUTE

Architectural Sites

## Contents

[Right suggests there is a wrong](#)

Photographs

[GERMANY](#)

[AUSTRALIA](#)

[FRANCE](#)

[NEW ZEALAND](#)

# ACUTE

## Architectural Sites

Right, suggests there is a wrong.

Right, is an angle formed by the perpendicular intersection of two straight lines on opposing axis of 90 degrees. The term right angle evolved as a reference to the "right" or perfect angle needed to construct the rectangle where each side is in parallel to an opposite side and is used as a standard building block in so many applications X, Y axis.

It was even more useful as a three dimensional manifestation in the construction of objects and buildings. Right angles divide the circle into four equal parts, 360 degrees become 4 parts, each of 90 degrees. Architects design rectangles, build cubes, build dwellings, whole precincts based on a grid. As an efficient means of design and orientation, whole city street layouts were designed based on the right angle. The mathematics, the geometry and philosophy of the right angle, it is known as a universal standard.

The grid became Mondrian's building blocks, the aerial view of the city and the shapes within it. Mondrian's art was highly utopian and was concerned with a search for universal values and aesthetics. He proclaimed in 1914: *Art is higher than reality and has no direct relation to reality. To approach the spiritual in art, one will make as little use as possible of reality, because reality is opposed to the spiritual. We find ourselves in the presence of an abstract art. Art should be above reality, otherwise it would have no value for man Through history it is the rectangle that continually appears in civilized societies.*

The concept and use of the right angle has its roots in the ancient Babylonians – who lived from about 4,000 BCE in what is now Iraq. These people had a long forgotten understanding of right-angled triangles that was much simpler and more accurate than the

conventional trigonometry taught in schools.

The ancient Egyptians also used special right triangles to survey land by measuring out 3-4-5 right triangles to make right angles.

As the Greek empire began to spread its sphere of influence into Asia Minor, Mesopotamia and beyond, they adopted and adapt useful elements from the societies they conquered including the right angle.

But not all building sites are based on the convenient right angle intersection, some sit on "wrong angles". It is buildings that sit on these peculiar sites that have intrigued me. The thinner the slither of land, the more intrigue. I am drawn by the gestalt and the feng shui energy. The term feng shui literally translates as "wind-water" in English.

Whether dictated by natural features, the geographic lay of the land or a considered design, building sites exist where the site is less than the perfect right angle. Perhaps a series of hills dictate a road that intersects another at an acute angle. The acute angle they form dictates a corresponding buildings site with angles less than the right angle. But due to the demand for space in the urban environment these sites are used. Despite the fact that they sit on sites whittled away from the full allotment, they can be imposing. Thin slithers of land Intersections. The architecture on these sites sit awkwardly on their foundation as if somehow, they might topple over

Modest single story buildings that sit tightly on acute sites have a particular presence.

With growing height these buildings become more impressive and somewhat confronting than a conventional right angle building, there is a difference balance or perceived imbalance and poise. Photographically, perhaps the most well known of these is the Flat Iron Building in New York and the images that Alfred Steiglitz made of this building.

In multi story buildings the view from the corner room seems to leave the viewer with the world at their feet. Like the bow of a ship.

Unlike the parallel lines of a rectangular building where the lines run to an visual vanishing point, the lines of the acute angle site meet as an inverted vanishing point in the foreground

Along with our interpretation of them, materials and the intimacy of surfaces have a richly complex language of their own that has evolved and changed over time. From the gravity of stone blocks to the thin veneers that cover the skeletal structure

Flatness of surfaces and materials, uniformity of illumination, as well as the elimination of micro-climatic differences, further reinforce the tiresome and soporific uniformity of experience. All in all, the tendency of technological culture to standardize environmental conditions and make the environment entirely predictable is causing a serious sensory impoverishment. Our buildings have lost their opacity and depth, sensory invitation and discovery, mystery and shadow.

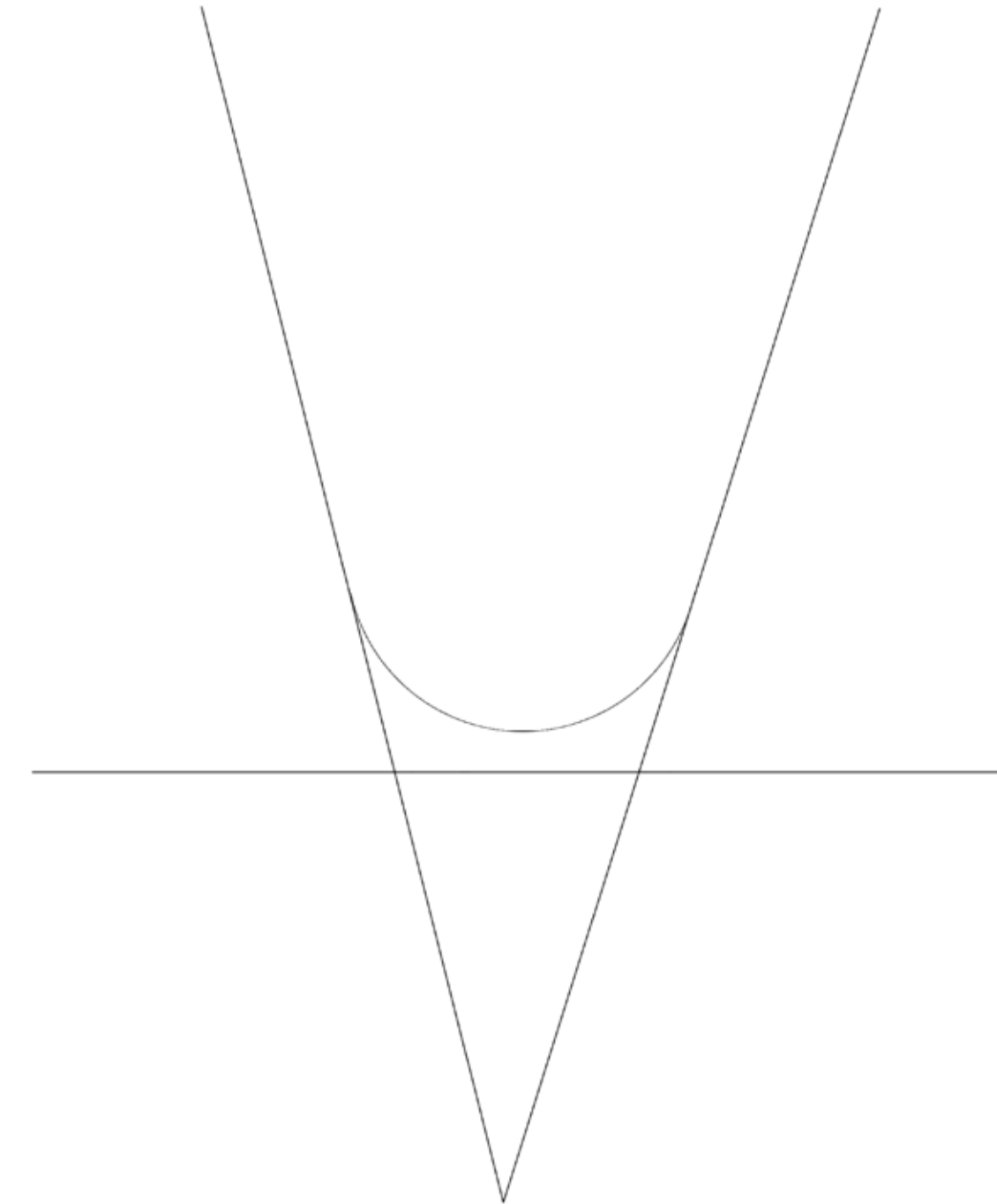
*ACUTE* offers a selection of photographs of a wide range of buildings that occupy these sites. Rather than 90 degrees some of these buildings occupy as

little as 23 degrees.

By nature the degrees of a geometric protractor is rational, each one adds to the other and builds to 90 degrees, 180 degrees and so on. But to our perception a building site of 85 degrees looks strange. However a site between 60, to 30 degrees, while more dramatic, feels less awkward. The loss of a few degrees from the right angle is somehow more disturbing.

As intriguing as the site, is to witness how each architect has responded to the site. While some have played with a knife edge as a feature, others have opted to cut the point off and blunt the intersection or end the intersection in a curve.

While some buildings where the wedge point is bunt, the dissection of the intersection is utilized as a doorway in and out of the space, while in others it is closed off.



Around 2000 I noticed many buildings in my home town Dunedin, New Zealand on acute sites and began photographing these with a 120 film camera. Over the next few years I added to the archive, photographing buildings in Oamaru, Timaru.

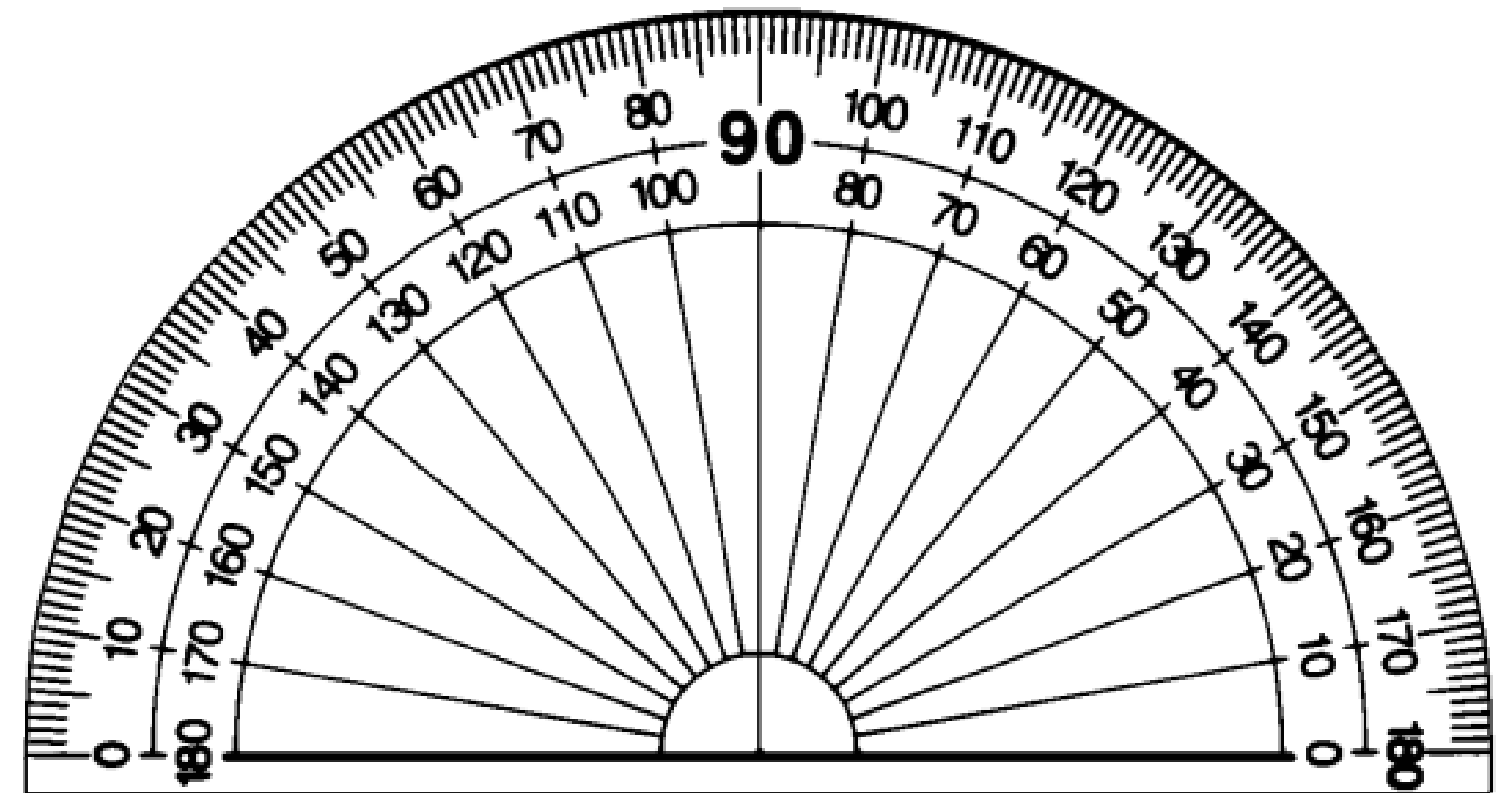
With my move to Melbourne in 2005 and the use of the digital camera periodically I continued to photograph buildings on acute sites, Trips to other cities like Sydney and Paris offered further opportunities.

The series of photographs was not planned, but slowly evolved while visiting various cities and chance encounters with acute sites.

Studying these architectural freaks I gained a further insight into the built environment which gave momentum to my work with alpha space and the greening of cities through the use of Tillandsia plants.

Like so many photographs, incidentally, a social commentary is also recorded. People included in the photographs interact, reveal dress codes, mannerisms etc. There is mystery in the photographs where the sides of the building divide two people about to meet at the intersection.

A woman appears to wipe a tear away as a waiter brings out the next coffee to expectant patrons.



# ACUTE

photographs  
Architectural Sites  
Australia



Near Holden st, Brunswick St, Melbourne, Australia - 2007 site angle 35 °



Cr Victoria St & La Trobe, Melbourne Australia - 2007



Cr Franklin & Victoria Sts, Melbourne, Australia - 2007





Cr Alexandra Prd & Brunswick St, Melbourne, Australia - 2007



Heidelberg Rd, Alphington, Melbourne, Victoria , Australia - 2008



Cr St Georges Rd & Taplin St,, Melbourne, Australia - 2007



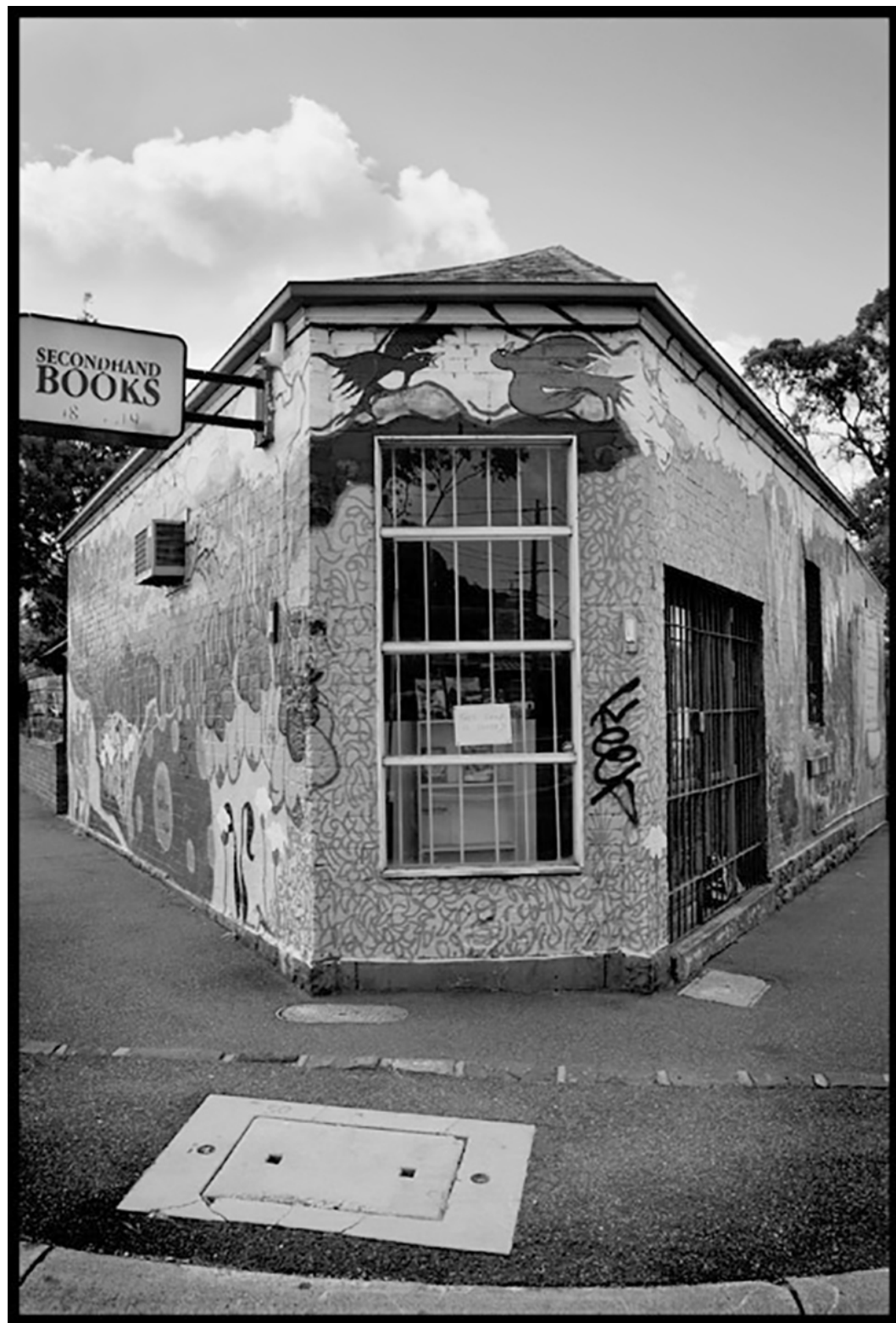
Cr Swanson & Victoria St, Melbourne, Australia - 2007



Albion Charles Hotel, Cr Charles st & Merre Prd, Melbourne, Australia - 2007



Gladstone Buildings, St Georges Rd, Melbourne, Australia - 200



Cr Hodgkinson st & Wellington St, Melbourne, Australia - 2007



St Georges Rd - Clausen St, Melbourne, Victoria, Australia - 2007



Tower Hotel, Cr Heidelberg Rd, and Old Heidelberg Rd, Alphington, Melbourne, Victoria , Australia - 2008



Corner of Dorsett & Bellara Rd, Melbourne, Australia - 2009



Cr Flinders St & Spencer St, Melbourne, Victoria , Australia - 2010



Esso BHP Billiton Wellington Entertainment Centre, 70 Foster Street, Sale, Australia - 2008



Cr Flinders St & Spencer St, Melbourne, Victoria , Australia - 2010



Camberwell junction, Melbourne, Australia - 2010



Camberwell junction, Melbourne, Australia - 2010



Camberwell junction, Melbourne, Australia - 2010

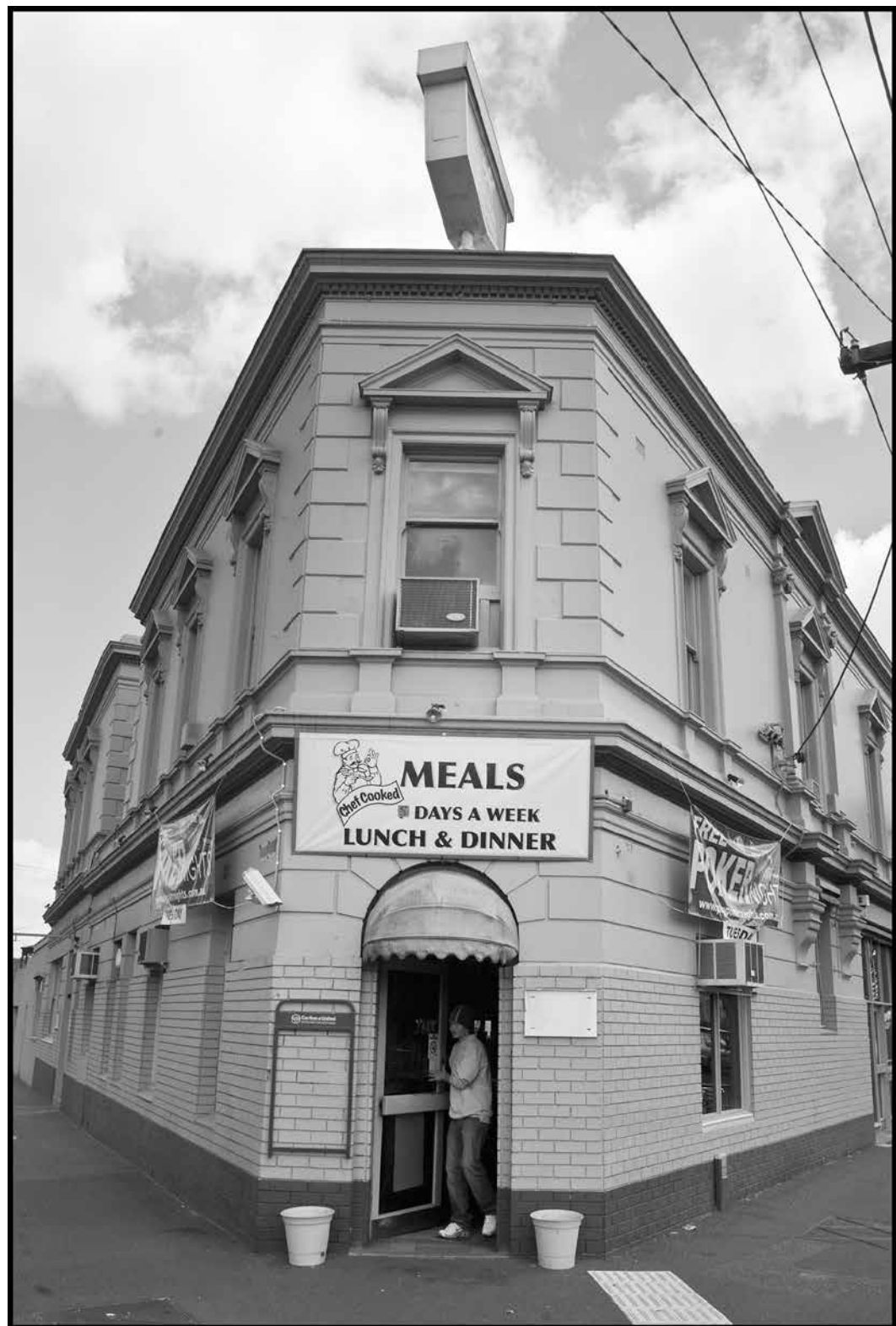




La Sera, St Georges Rd & Clauscen St, Melbourne, Australia



St Georges Rd & Barkly St, Melbourne, Australia



Queens Parade, Gold St, Melbourne, Australia



Little St Vincent St, Melbourne, Australia



Fosters, Cr Duke St & Sothampton Cres. Richmond, Melbourne - 2013



Little St Vincent St, Melbourne, Australia



Greensborough, Melbourne - 2011



Junction Hotel, 15 Hall St , Newport , Melbourne, Australia - 2009



Treat, Cr Malvern Rd & Beatty Ave, Melbourne, Australia



Cr Elizabeth and Chalmers St - Central Railway Station - Sydney Australia - 2008



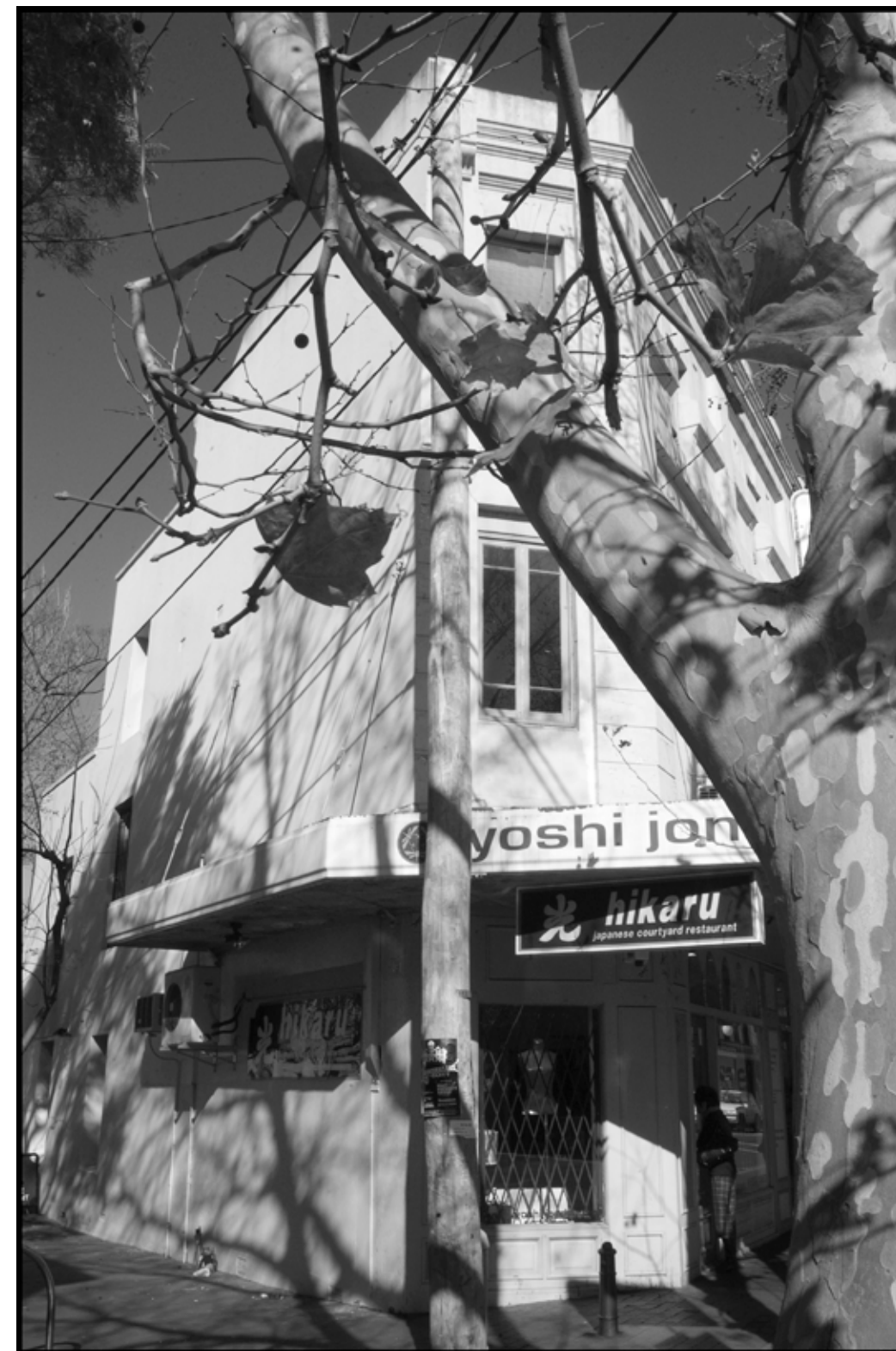
Corner of Randle St and Randle Lane, Sydney, Australia - 2008



Cr Melrose Place and Jersey Rd, Paddington, Sydney, Australia - 2008



Sir Thomas Mitchell Rd, Bondi Beach, Sydney, Australia - 2008



Sydney, Australia - 2008

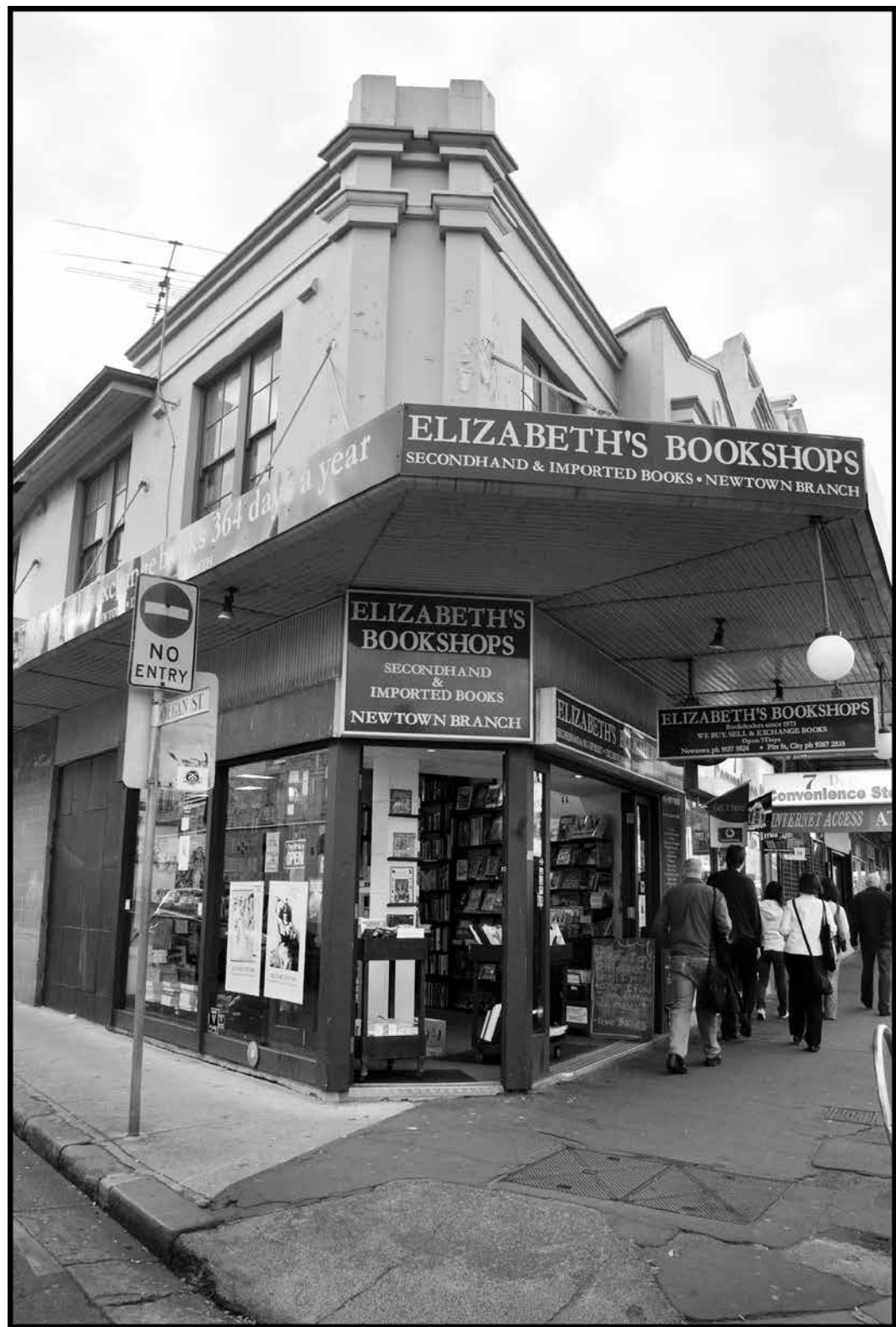


Pretty Dog, Newtown, Sydney, Australia - 2008

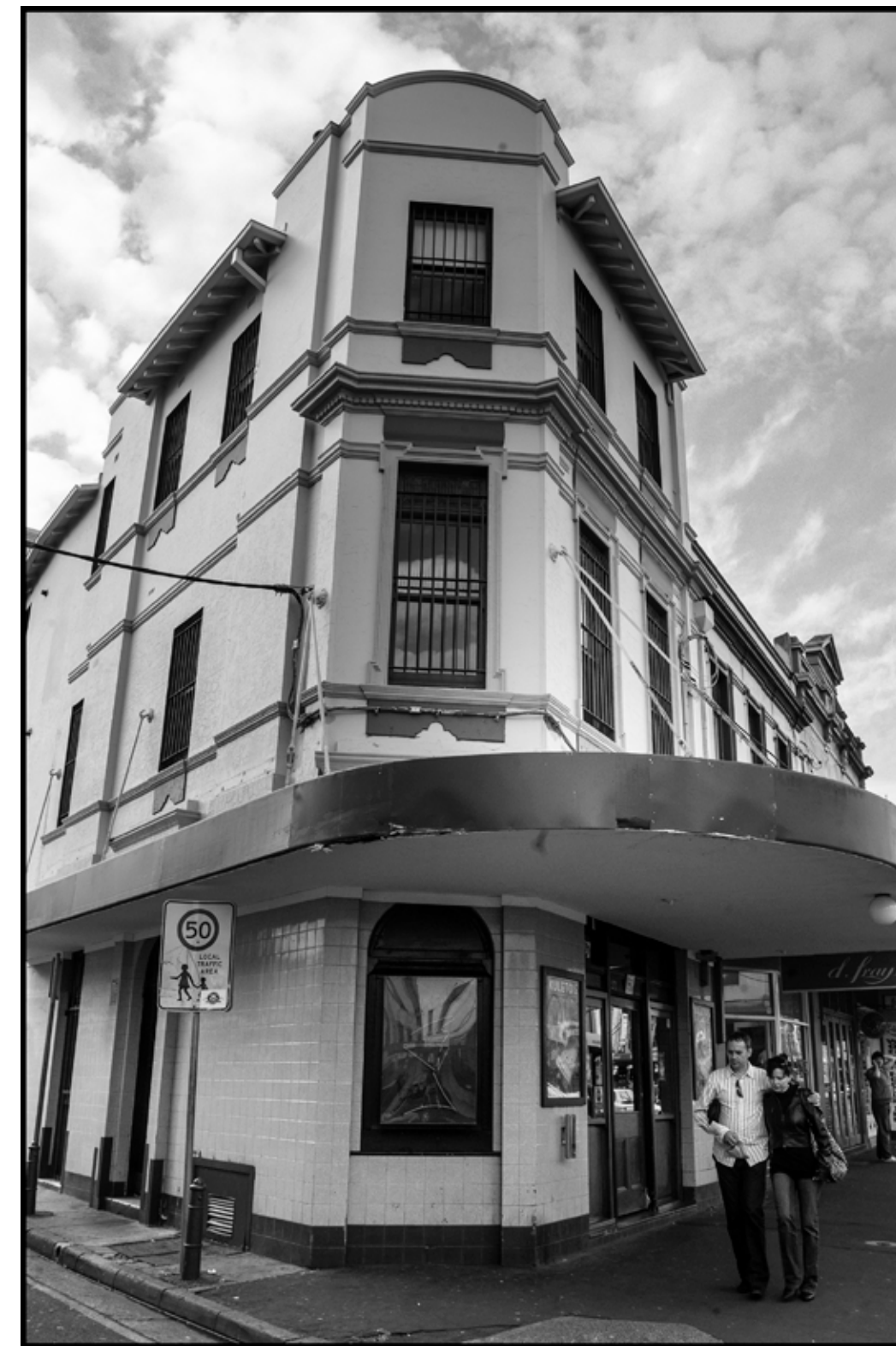


Corner King St and O'Connell St, Newtown, Sydney, Australia - 2008





Corner King St and Egan St , Newtown, Sydney, Australia - 2008



Newtown, Sydney, Australia - 2008



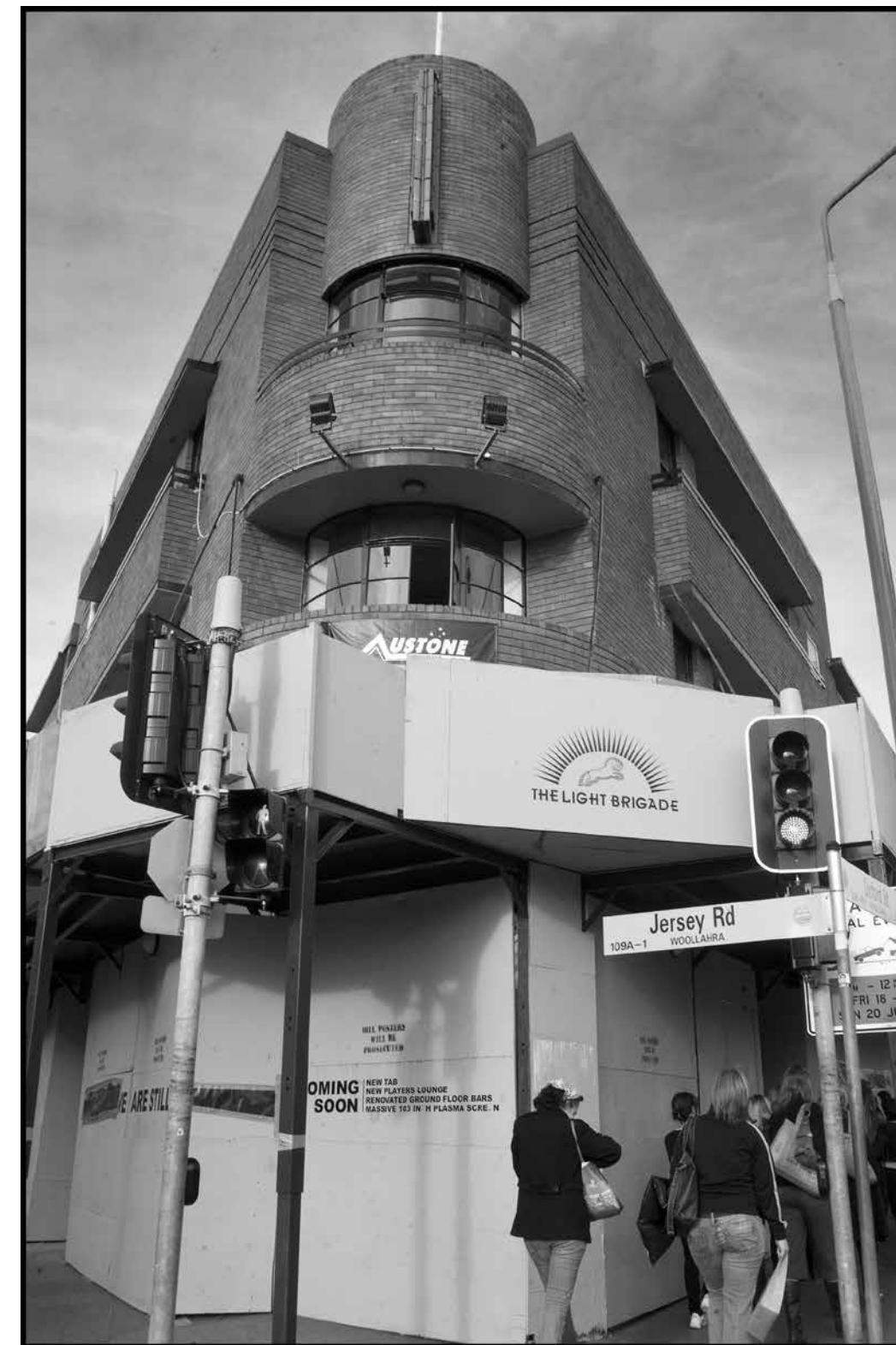
Corner King St and Church St, Newtown, Sydney, Australia - 2008



ZanziBar, Corner King St and Eliza St, Newtown, Sydney, Australia - 2008



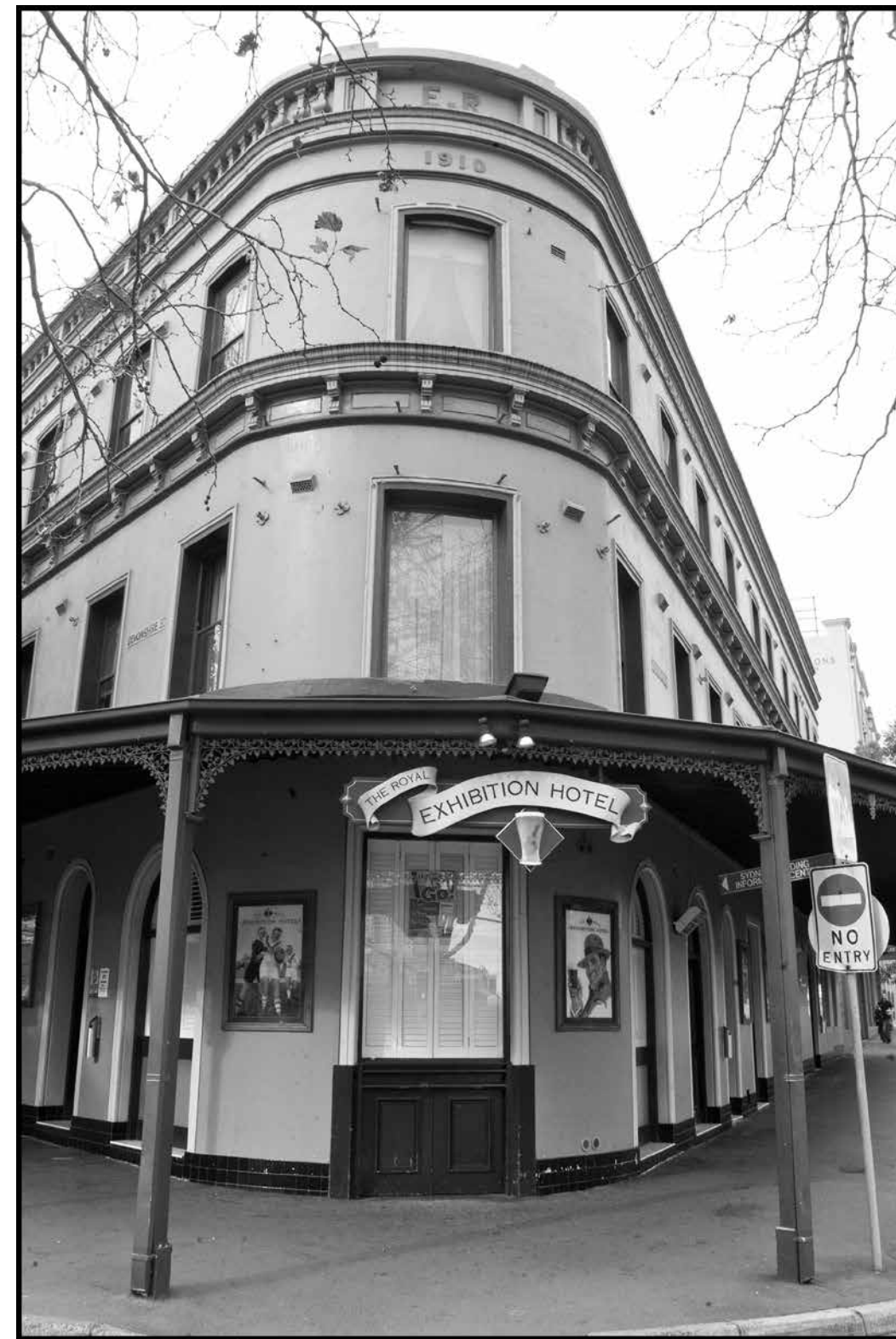
Corner King St and Wilson St, Newtown, Sydney, Australia - 2008



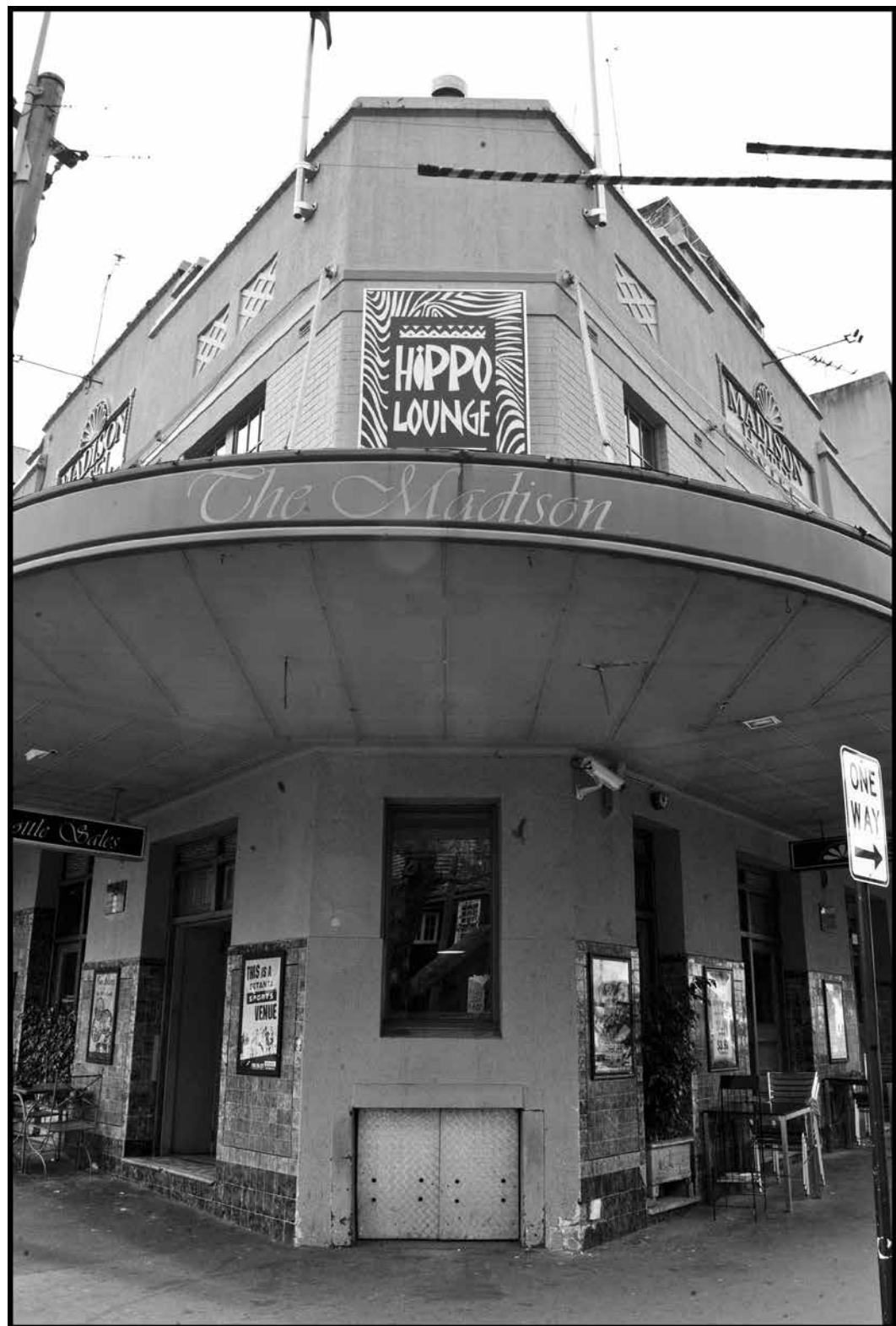
Cr Oxford St and Jersey Rd, Paddigton, Sydney, Australia - 2008



Central Hotel, Sydney, Australia - 2008



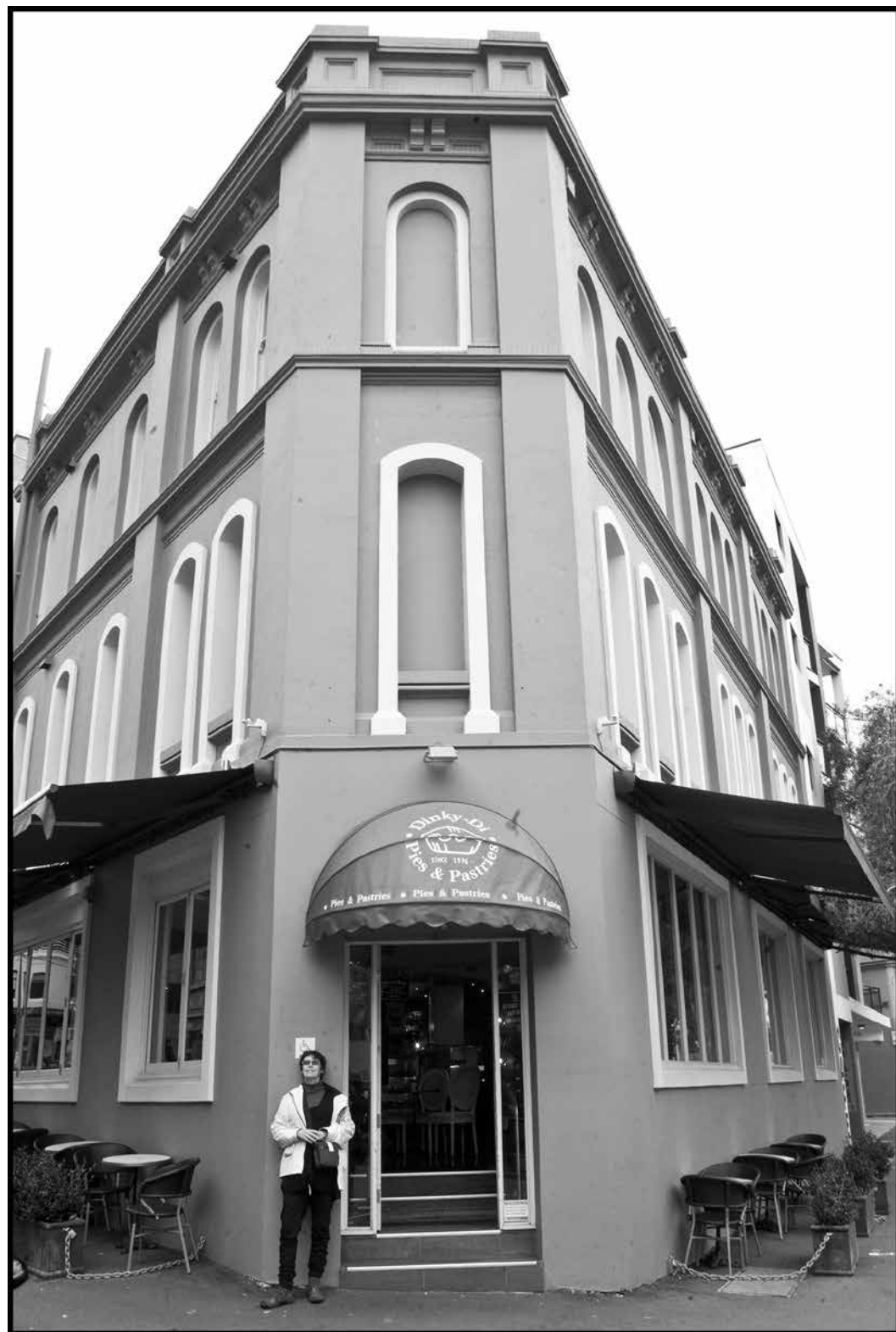
The Royal Exhibition Hotel, Cr Devenshire St and Chalmers St, Sydney, Australia - 2008



The Madison, Cr Devonshire St and Randle St, Sydney, Australia - 2008



Elephant Jump Thai, and Amblique, Cr Devenshire St and Buckingham St, Sydney, Australia - 2008



Dinky - Di, Cr Devenshire St and Elizabeth St, Sydney, Australia - 2008



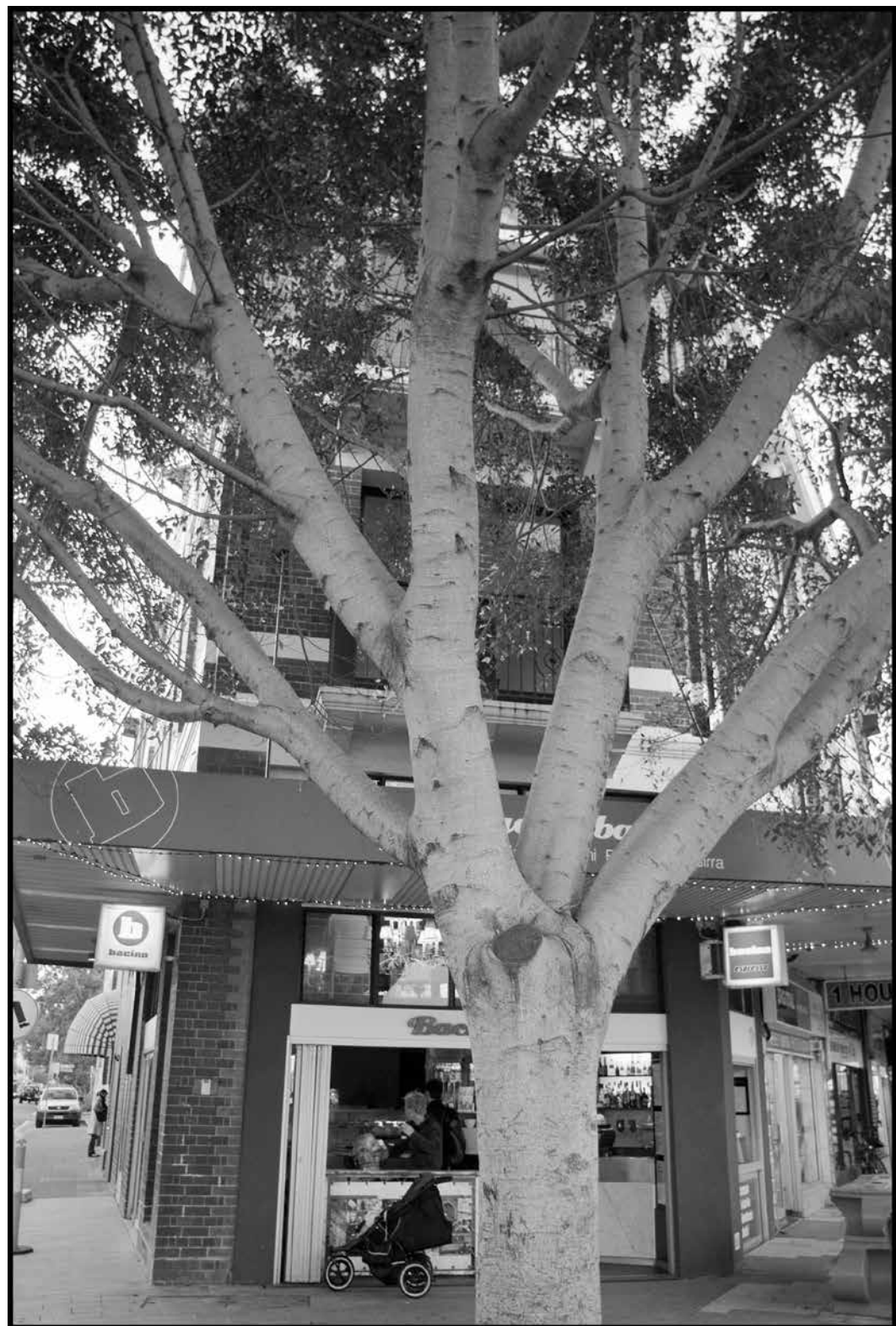
Core, Cr Devenshire St and Elizabeth St, Sydney, Australia - 2008



Dion, Corner Belgrave St and Esplanade, Manly, Sydney, Australia - 2008



New Brighton Hotel, Corner Belgrave St and, Manly, Sydney, Australia - 2008



Sydney, Australia - 2008



Sydney, Australia - 2008





Cr O'Connell St & Bent St, Sydney, Australia - 2008



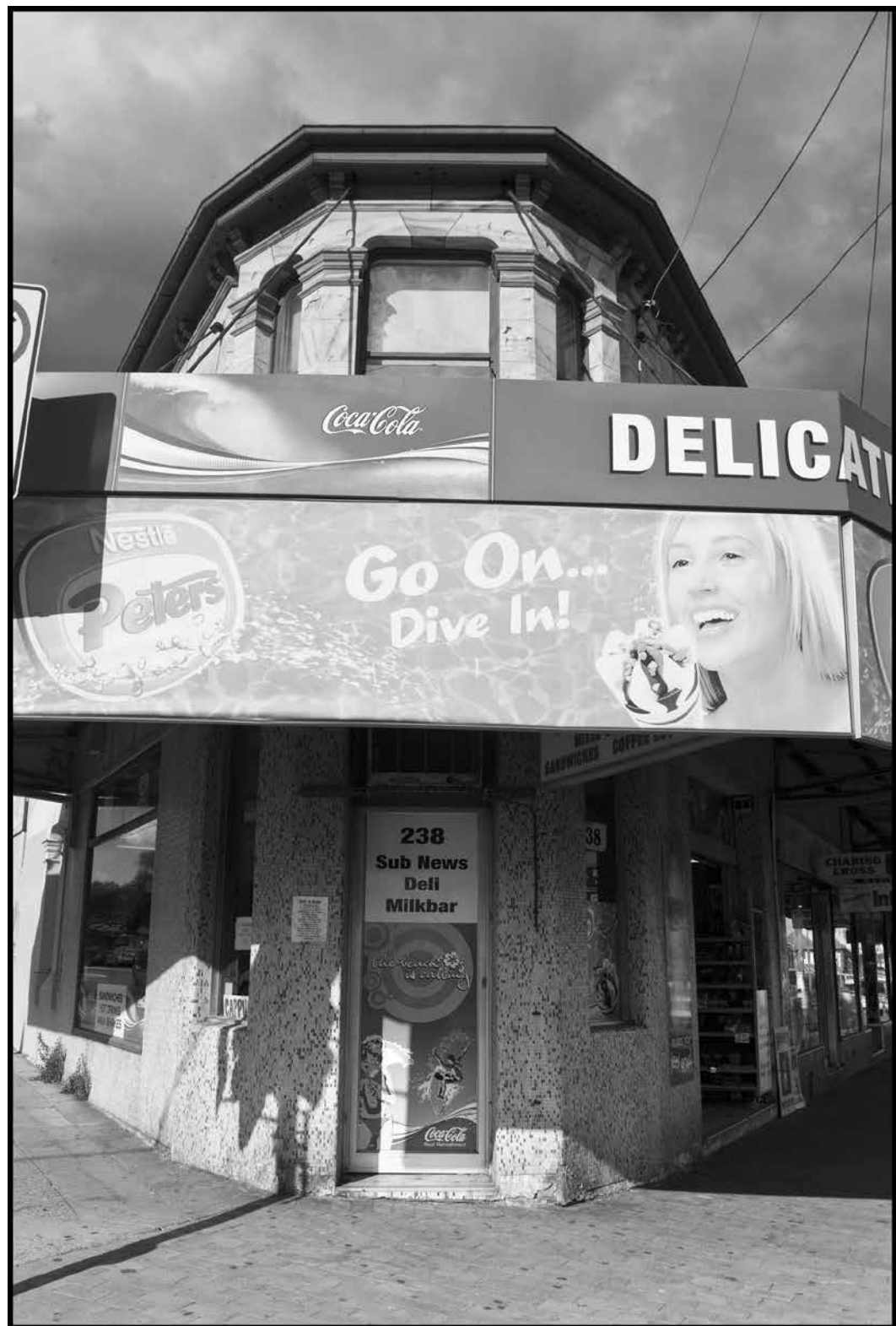
Bridge St, Sydney, Australia - 2008



Robin Hood Hotel, Sydney, Australia - 2008



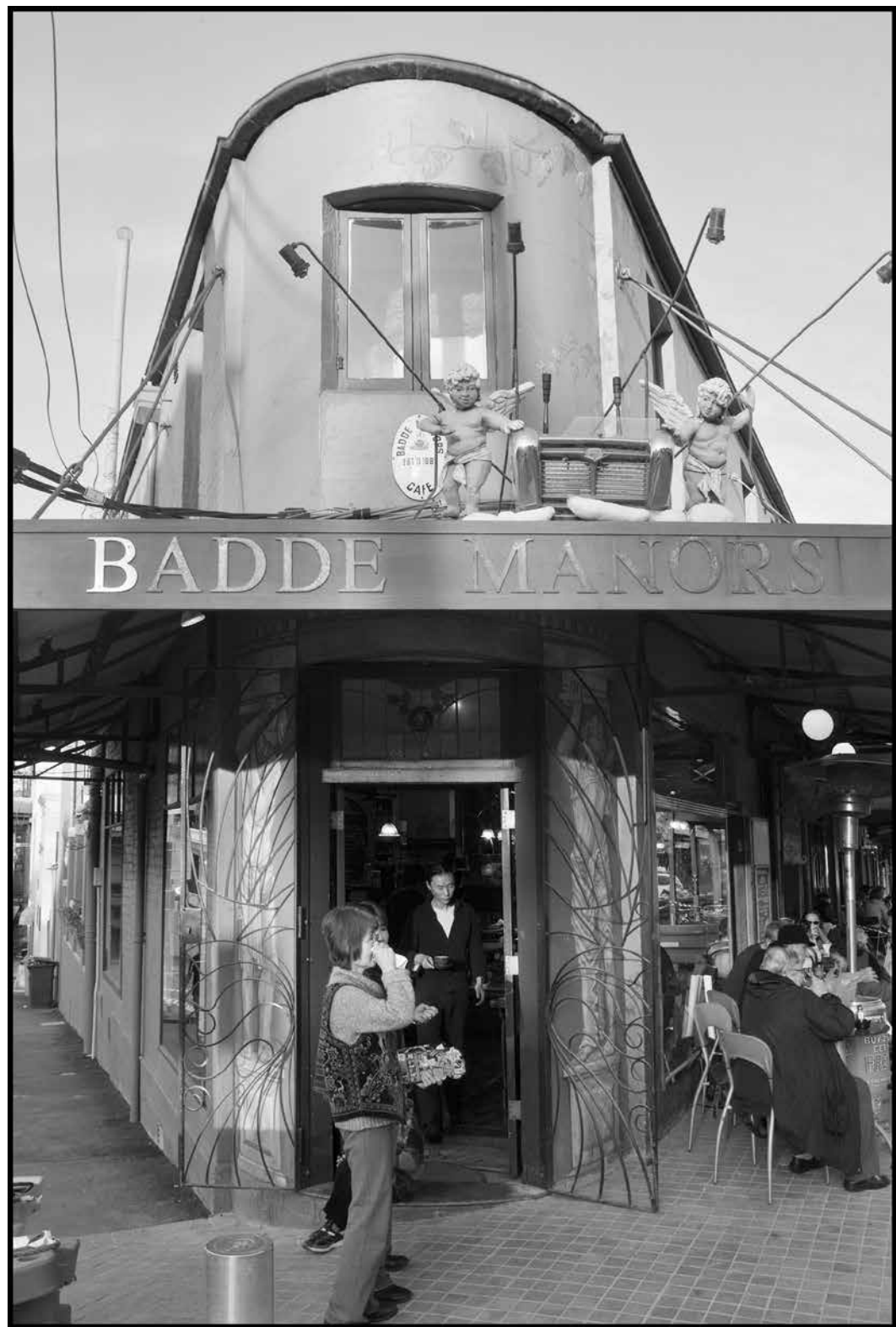
Bronte Rd, Sydney, Australia - 2008



Sub News Deli Milkbar, Sydney, Australia - 2008



Cr Albion St & Bronte Rd, Sydney, Australia - 2008



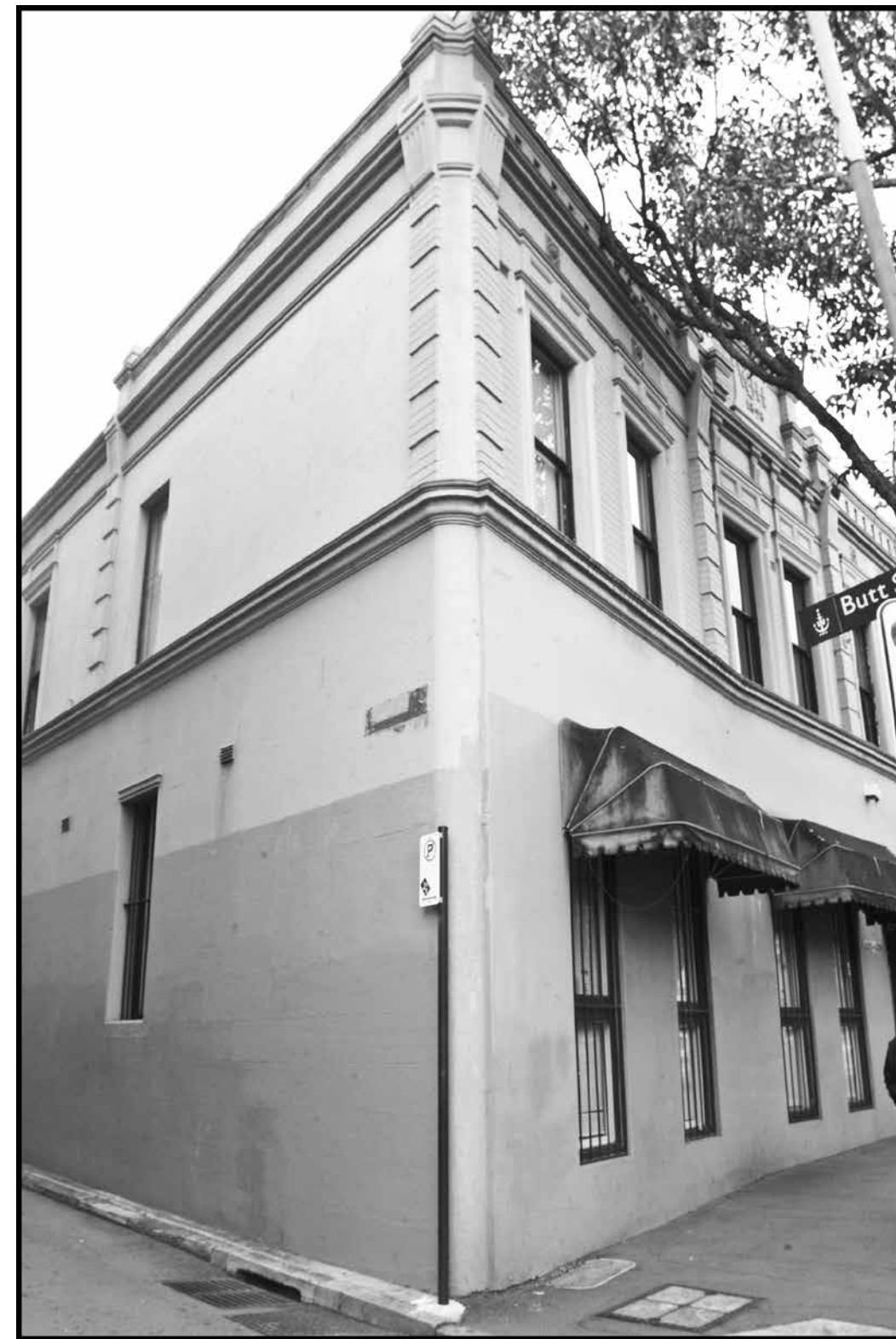
Badde Mannors, Francis St, Sydney, Australia - 2008



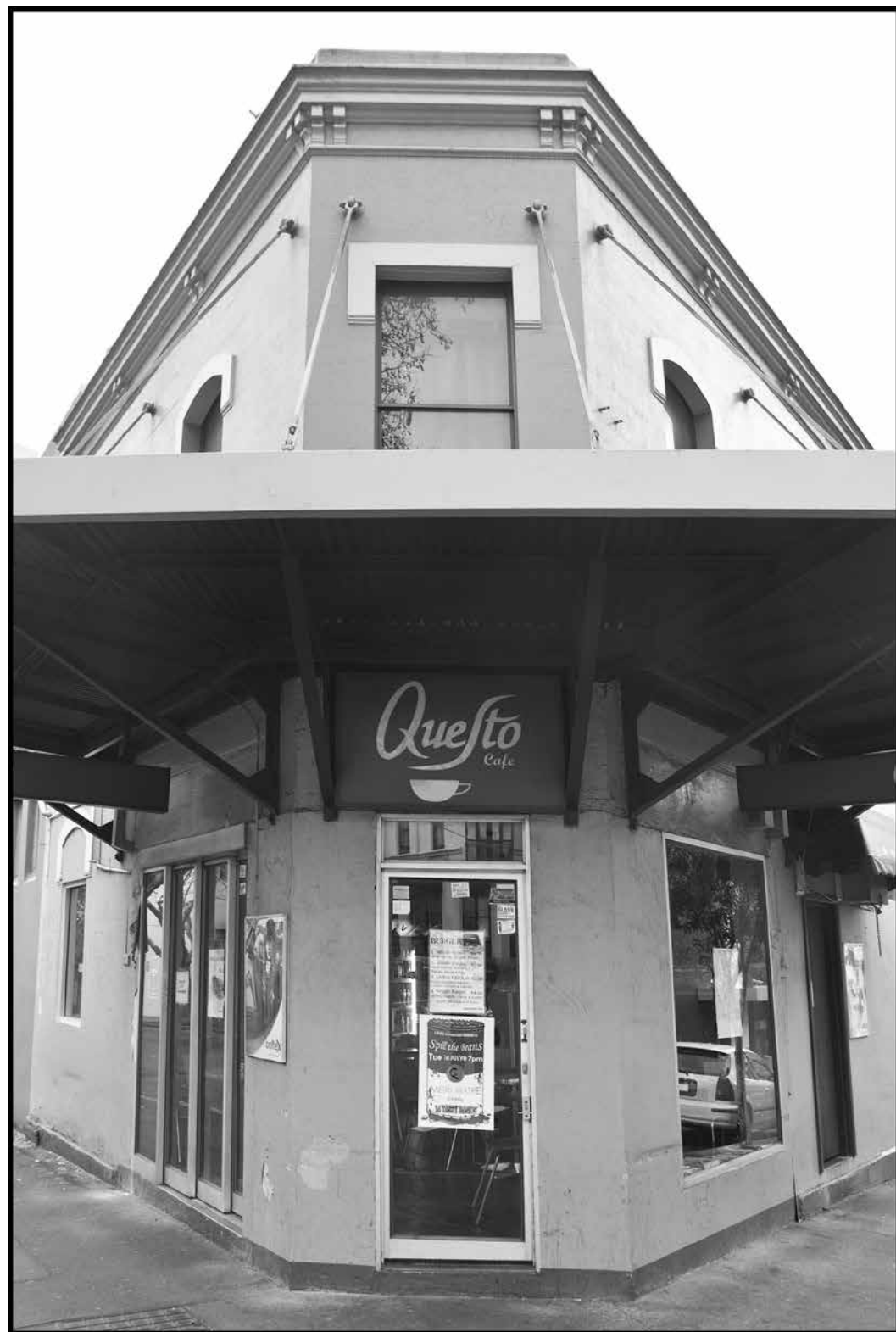
Stell\*r, Sydney, Australia - 2008



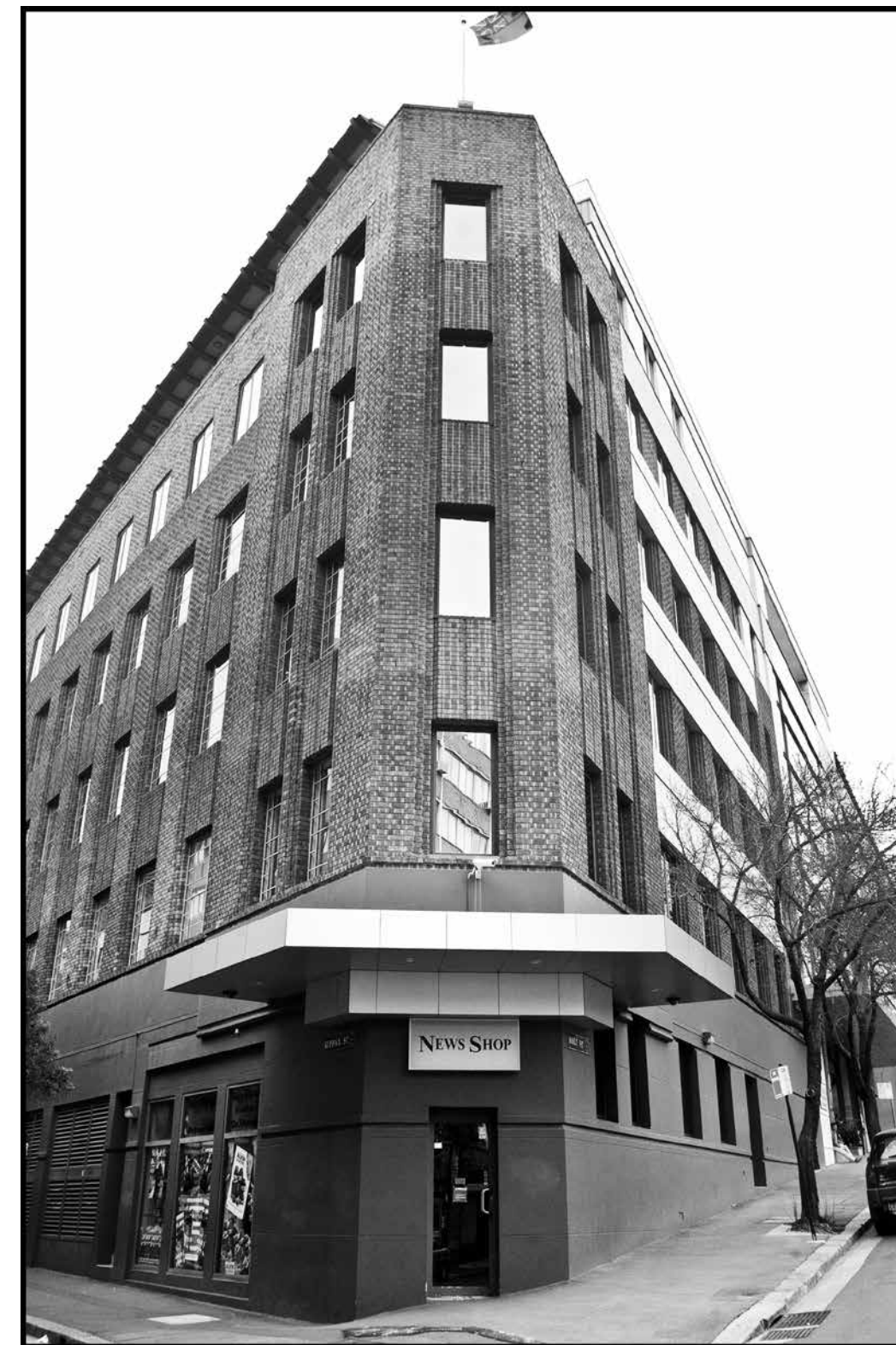
Cr Holt St & Cooper St, Sydney, Australia - 2008



Butt St, Sydney, Australia - 2008



Quoito Cafe, Holt St, Sydney, Australia - 2008



Kippax St, Sydney, Australia - 2008



Terry St, Sydney, Australia - 2008



Sydney, Australia - 2008



Kippax St, Sydney, Australia - 2008



VISLAB, Corner Cleveland St and City Rd, Sydney, Australia





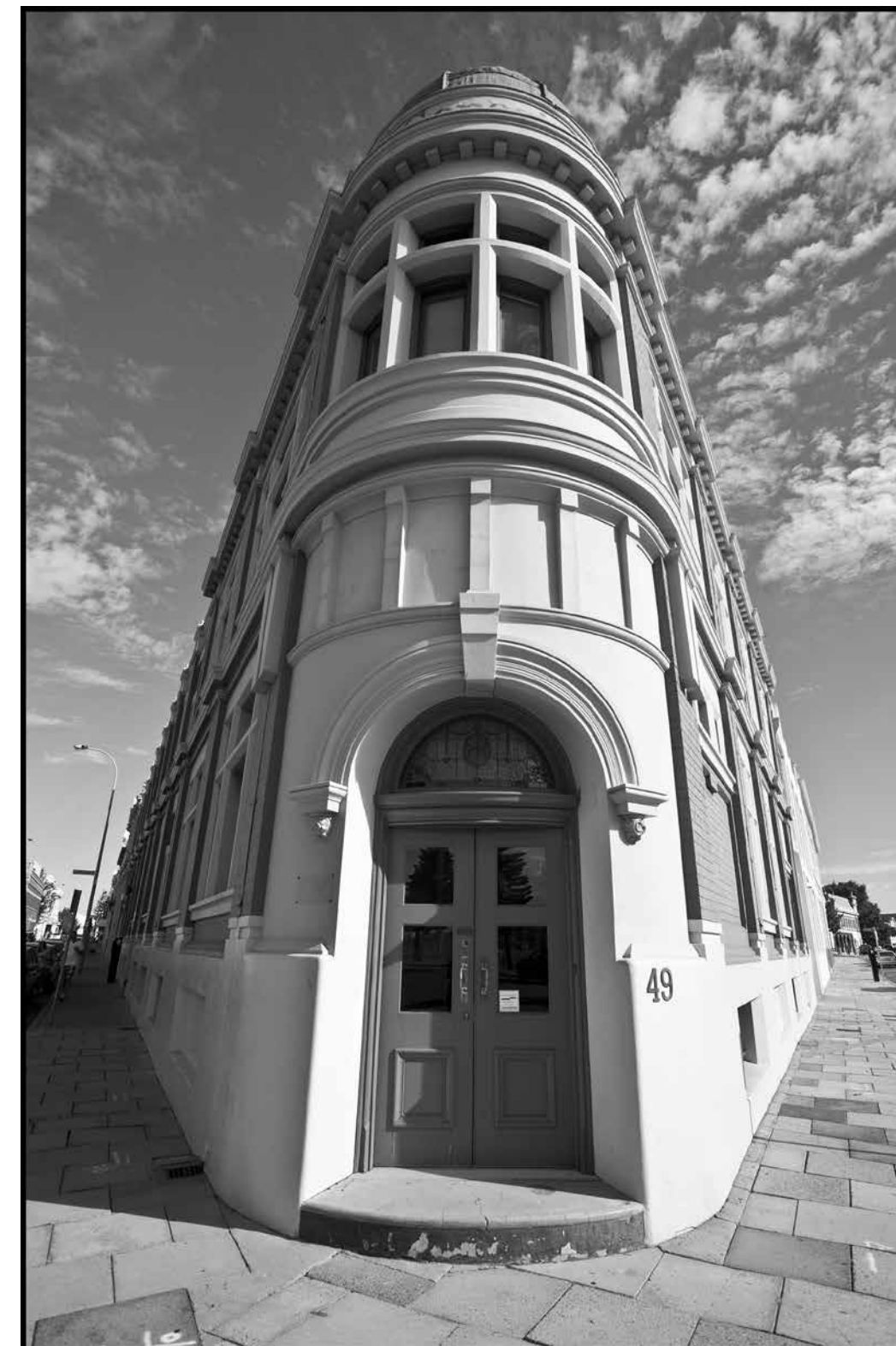
Acute Architectural Site, Perth, Australia 2012



Acute Architectural Site, Perth, Australia 2012



Corner Adelaide St and William St, Fremantle, Australia 2012



Corner Adelaide St and William St, Fremantle, Australia 2012



Wagga Wagga Art Gallery, Australia 2013



Wagga Wagga Art Gallery, Australia 2013



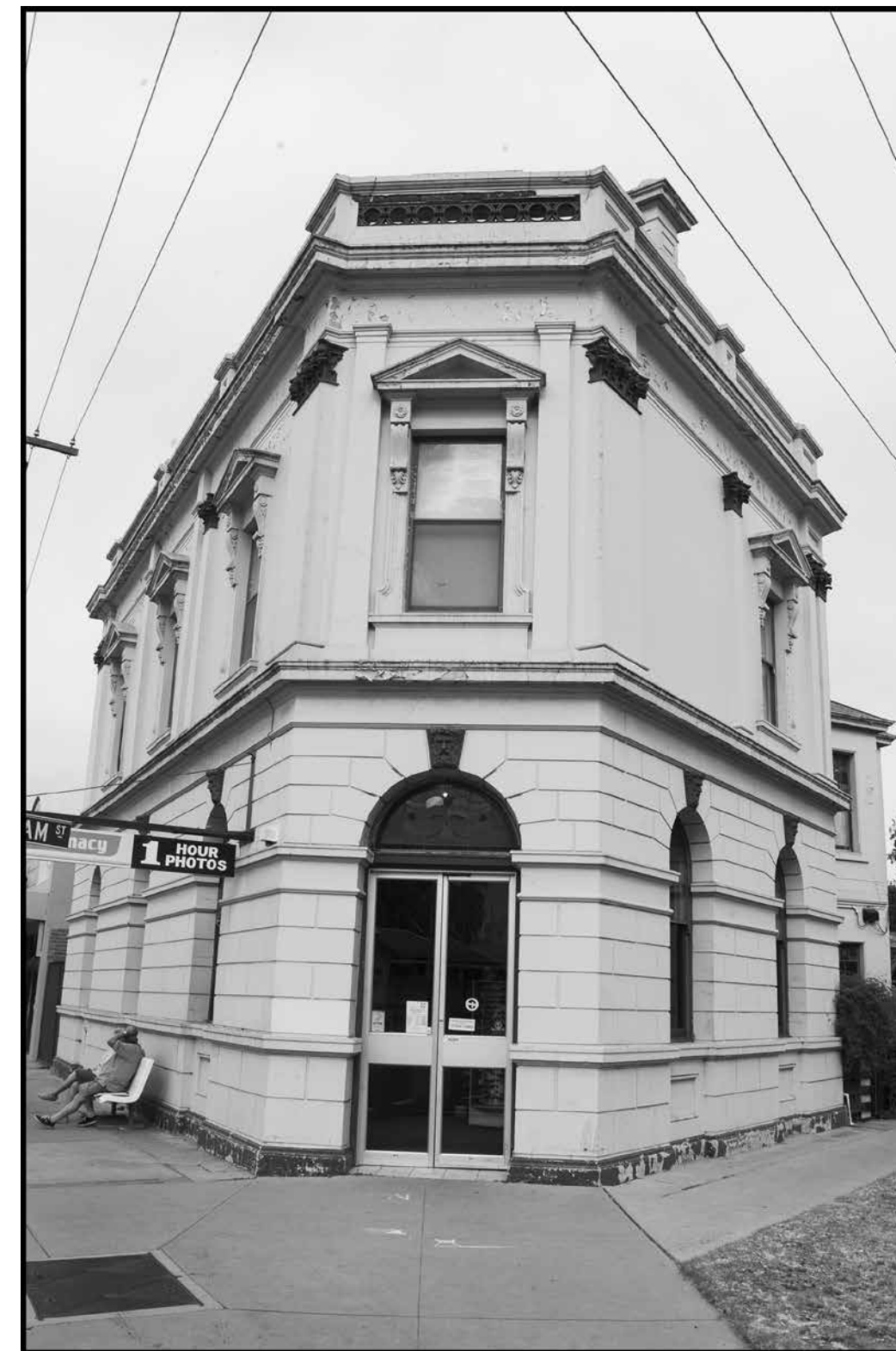
Wagga Wagga Art Gallery, Australia 2013



Wagga Wagga Art Gallery, Australia 2013



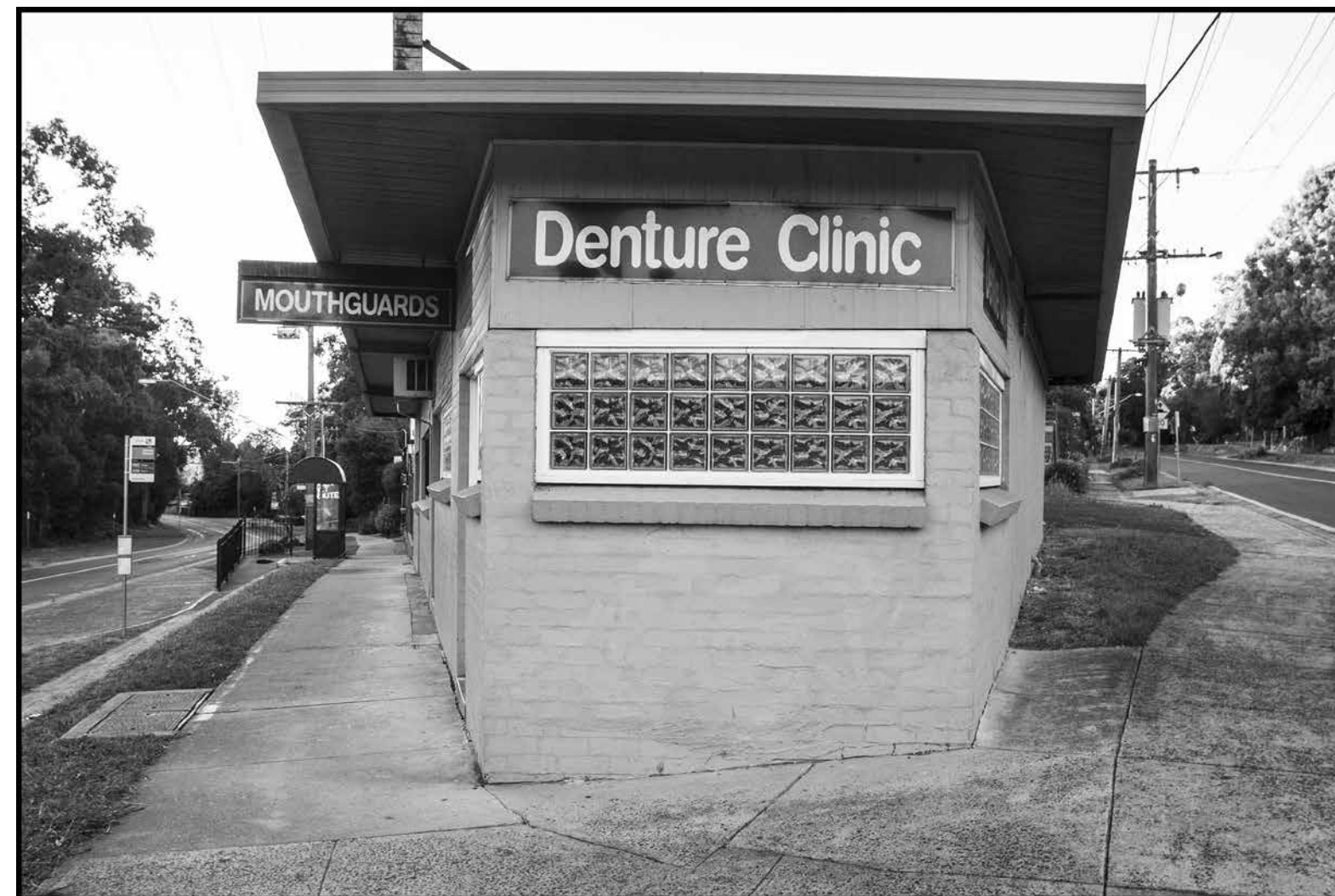
Melbourne Road, WILLIAMSTOWN , Melbourne, Australia - 2009



Cr Victoria St & Broughton St, Nhill, Victoria, Australia - 2008



Corner of Exeter & Bellara Rd, Melbourne, Australia - 2009



Cr Main St and Mahony St Upwey, Victoria , Australia - 2008



the Puffing Billy Cafe, Cr Blacksmiths Way and Burwood Highway, Belgrave, Victoria , Australia - 2008



Cr Blacksmiths Way, Belgrave, Victoria , Australia - 2008



Macpherson St, Western Highway, Nhil, Victoria , Australia - 2008



Victoria St Nhil Yanac Rd, Nhil, Victoria , Australia - 2008





Brotherhood of St Laurence, Station St, Pakenham, Victoria, Australia - 2008



Main Street, LILYDALE Victoria , Australia - 2008

# ACUTE

photographs  
Architectural Sites  
France



Corner rue de la Banque & rue de Pitis Peres, Paris, France - 2006



Paris, France - 2006



Crest, Drome Valley, France - 2007



Corner Rue Armand Carral, Avenue Jean Jaures, 19e Arrt, Paris, France - 2010



Corner Quai Jemmapes, Rue Bichat, 19e Arrt, Paris, France - 2010



Corner Rue Saint Honoré, 1e Arrt, Paris, France - 2010



Rue Reaumur, Paris, France - 2010



Rue De la Lume, Paris, France - 2010



Cr Rue Des Vinaigriers & Rue Lucien Sampaix Paris, France - 2010



Paris, France - 2010



Paris, France - 2010



Rue Jean Poulmarch, Paris, France - 2010



Paris, France - 2010





Rue De Lancry, Paris, France - 2010



Monalisait, Rue de La Lune, Boulevard de Bonne Nouvelle, Paris, France - 2010



Corner Rue Beauregard, Passage Rue de Clery, Paris, France - 2010



Rue Reaumur, Paris, France - 2010



Rue Reaumur, Paris, France - 2010



Avenue de L'Opera, Paris, France - 2010



Rue Des Filles Saint Thomas, Paris, France - 2010



Rue Brongniart, Paris, France - 2010



Rue Montmartre, Rue Croissant, Paris, France - 2010



Rue Mulhouse, Paris, France - 2010



Rue Vinaigriers, Paris, France - 2010



Rue Poissonnière, 2 e Arrt, Paris, France - 2010, Paris, France - 2010



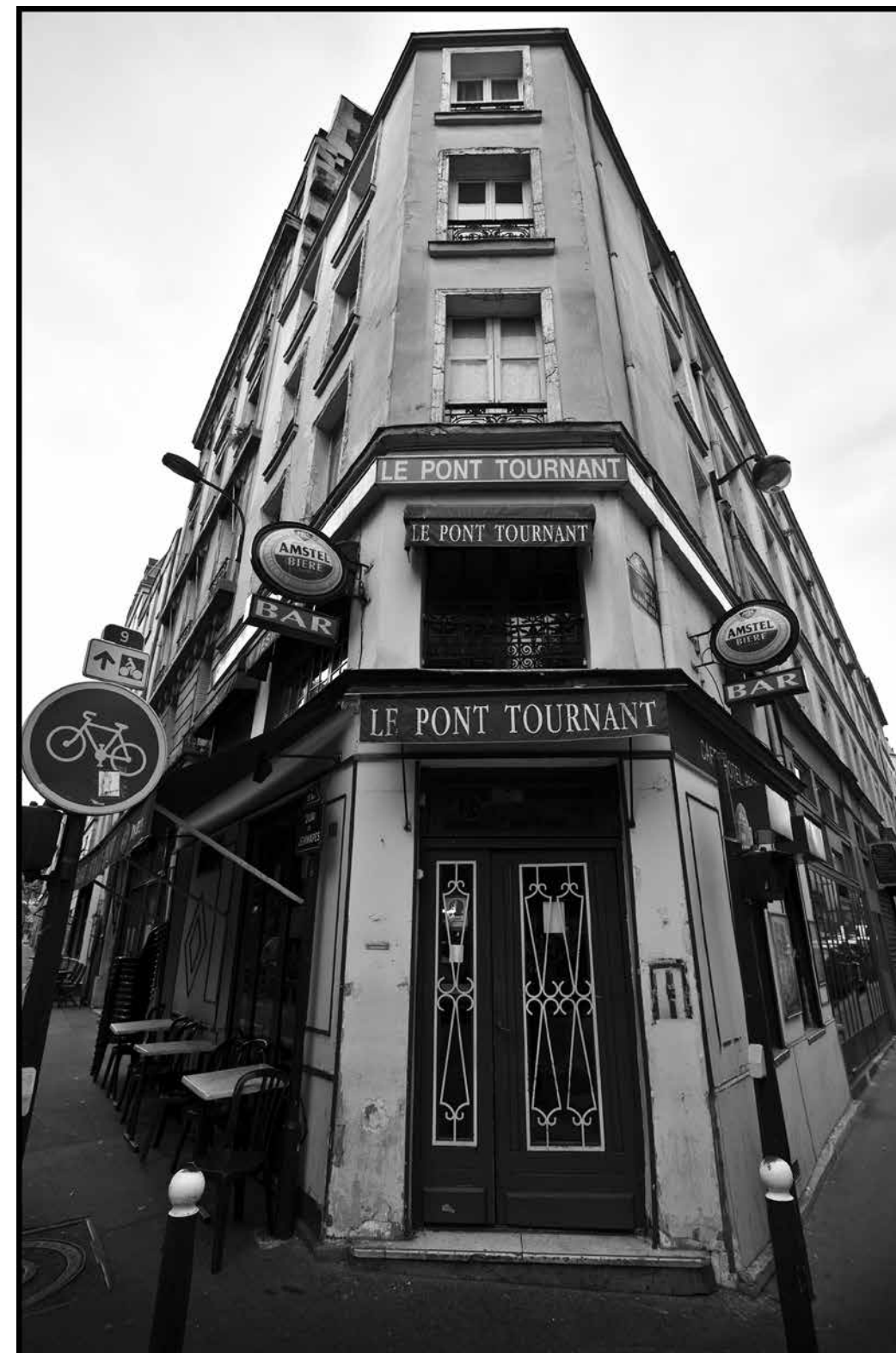
Corner Rue De Clery & Rue Petits Carreaux, 2 e Arrt, Paris, France - 2010



Corner Rue Pitits Carreaux & Rue D' Aboukir, Paris, France - 2010



Rue Damiette, Paris, France - 2010

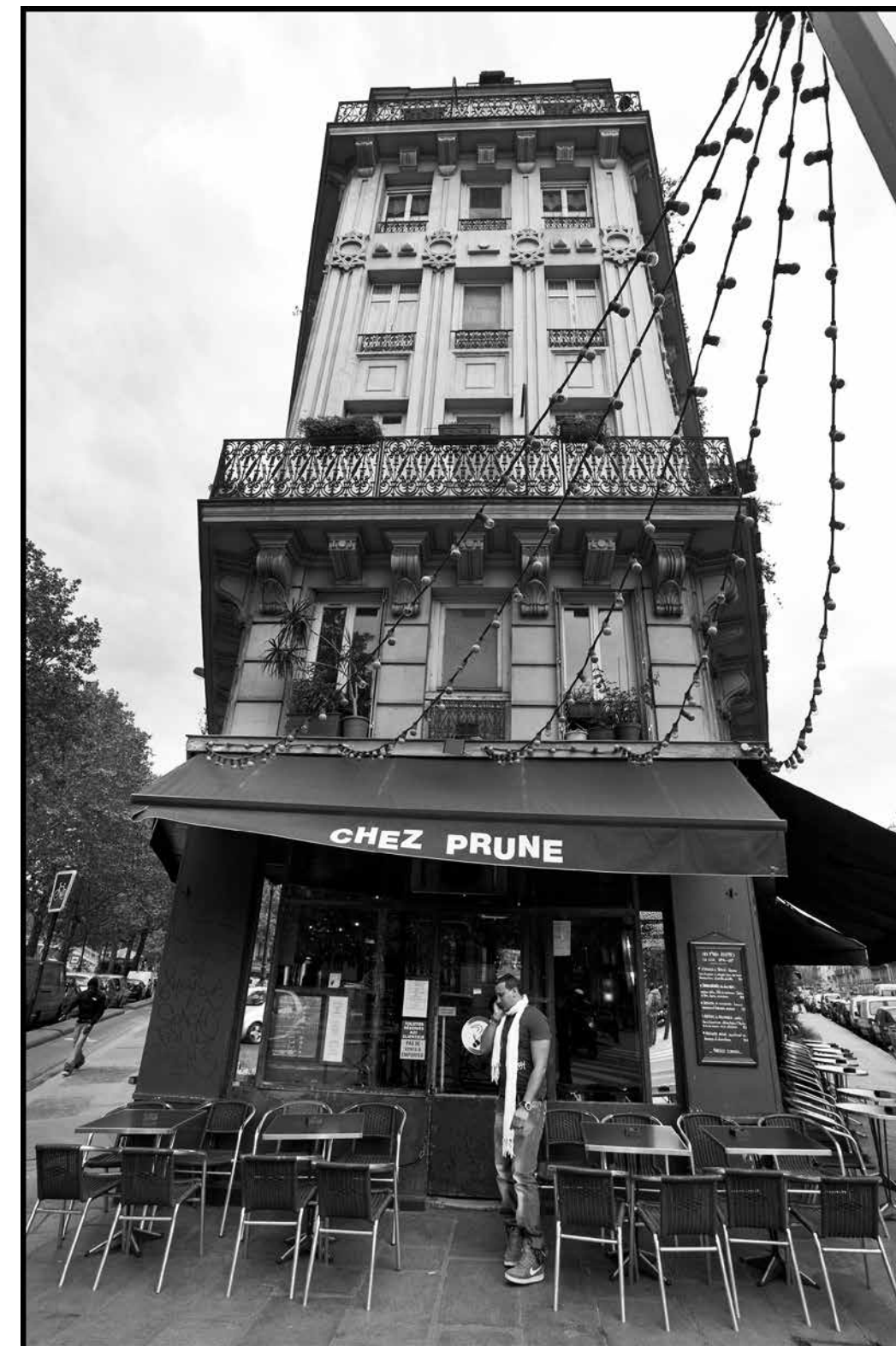


Le Pont Tournant, Corner of Quai de Jemmapes, Rue Bichat, Paris, France - 2010





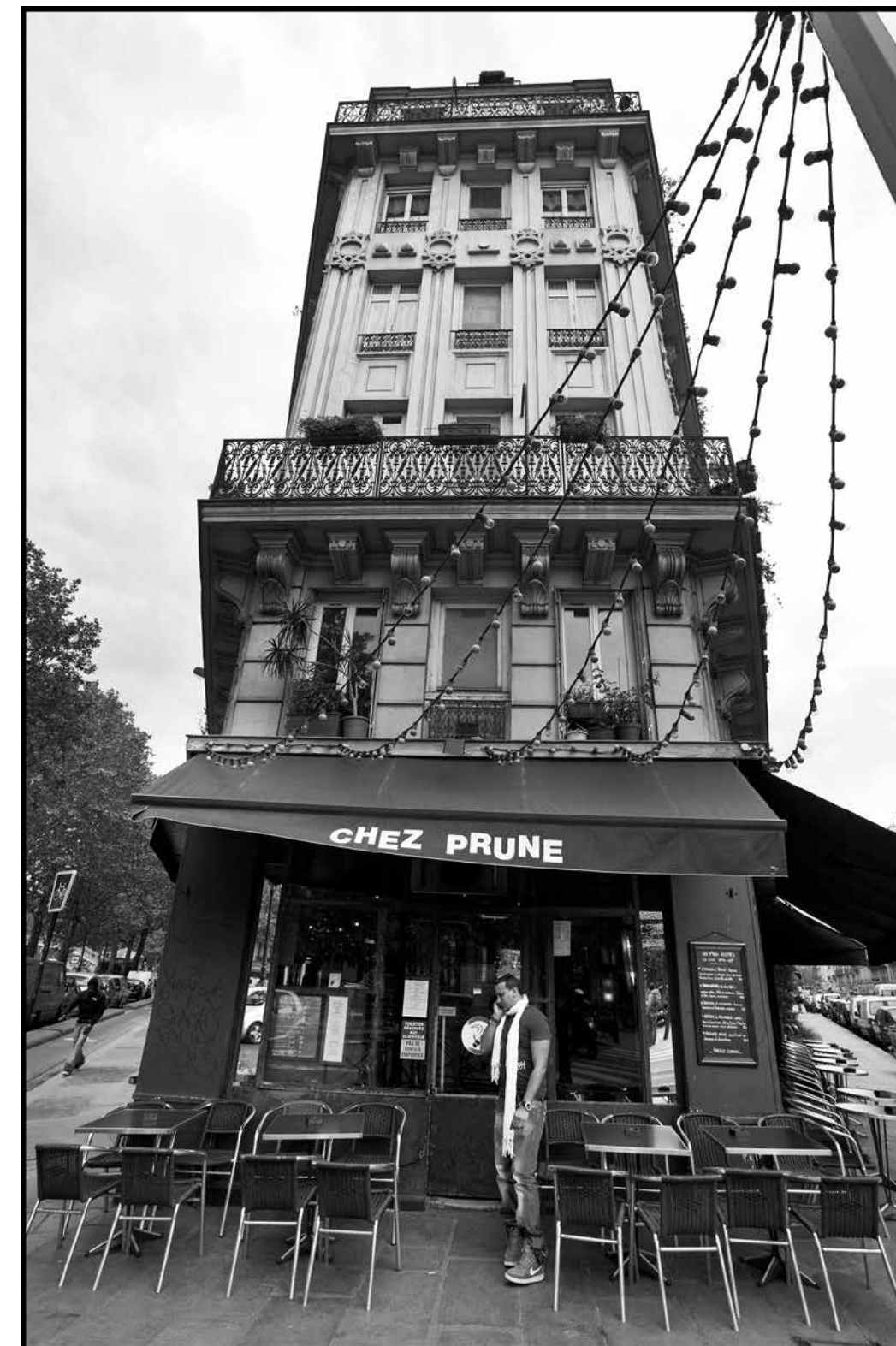
Rue Beaurepaire, Paris, France - 2010



Chez Prune, Corner of Quai de Valmy, Rue Beaurepaire, Paris, France - 2010



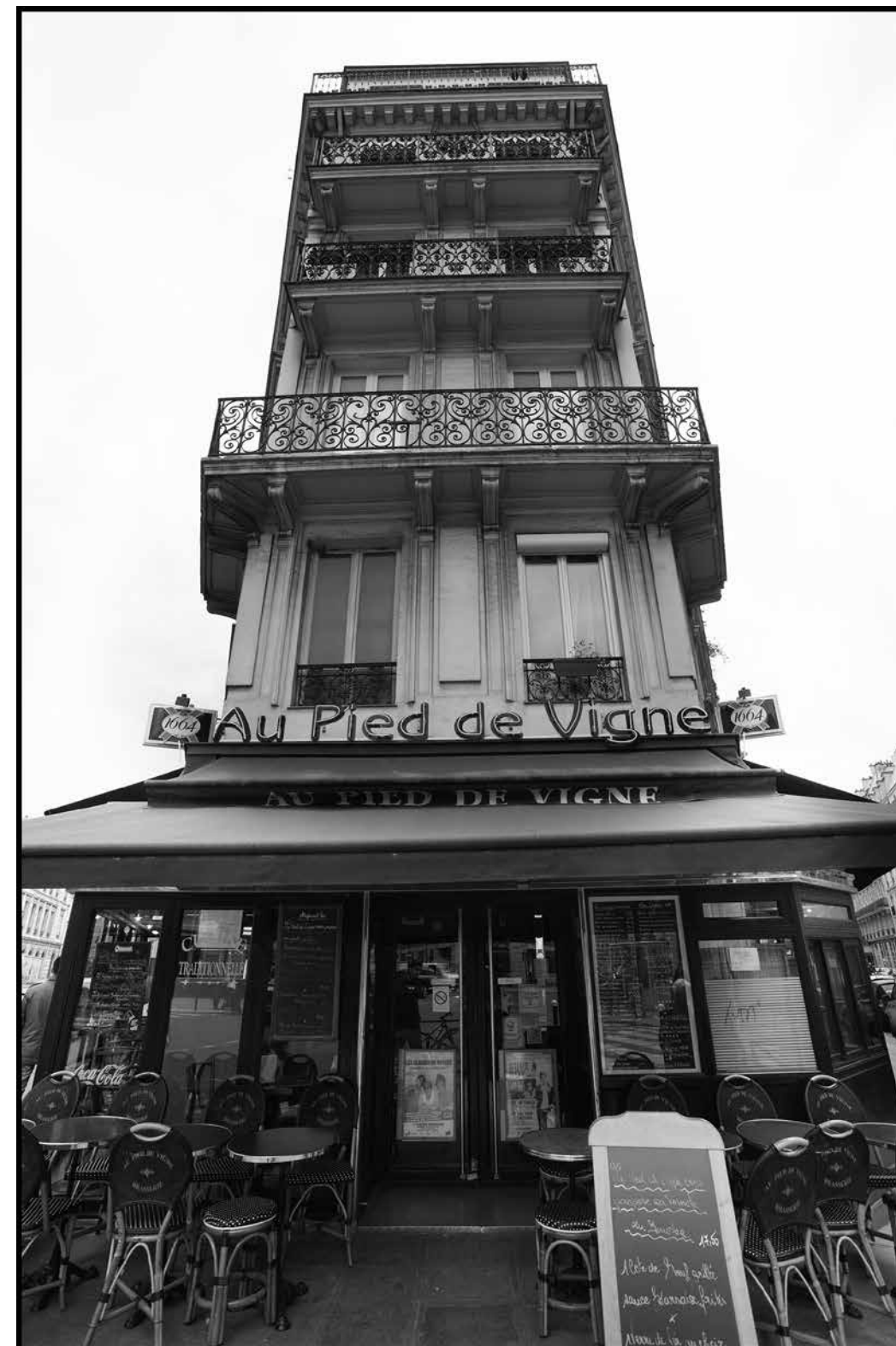
Rue Beaurepaire, Paris, France - 2010



Chez Prune, Corner of Quai de Valmy, Rue Beaurepaire, Paris, France - 2010



Paris, France - 2010



Paris, France - 2010



Paris, France - 2010



Paris, France - 2010



Rue Eugene Arnaud & Rue Docteur Scheffer, Crest, France - 2010



Paris, France - 2010

# ACUTE

photographs  
Architectural Sites  
Germany



Lubeck, Germany, 2019



Lubeck, Germany, 2019



Cr An der Obertrave & Depenau Street, Lubeck, Germany, 2019



Lubeck, Germany, 2019



# ACUTE

## photographs Architectural Sites NEW ZEALAND



Albert Arms, Corner of George St & London St, Dunedin, New Zealand - 2001



Physiotherapy Building, Otago University, Dunedin, New Zealand, 2002



Cr Moat & McKenzie St, Dunedin, New Zealand, 2002



Countdown Carpark, Dunedin, New Zealand, 2002



Corner Moray Place and Great King St, Dunedin, New Zealand, 2002



Hotel South Otago, Balclutha South Otago, New Zealand, 2002



Imperial Building, Cr Dowling St & High st, Dunedin, New Zealand, 2002



Crn, Dowling St & Burlington St, Dunedin, New Zealand, 2002



Old NZR Garage, Dunedin, New Zealand, 2002



Cr Dunbar and High St, Dunedin, New Zealand, 2002



Leviathan Hotel, Cr Cumberland and High st, Dunedin, New Zealand, 2002



Thomas Burns St, Dunedin, New Zealand, 2002



Queens Drive, Dunedin, New Zealand 2002



South Dunedin, New Zealand 2002



Cr Cresswell and Willis and Thomas Burns St, Dunedin, New Zealand 2002





South Dunedin, New Zealand 2002



South Dunedin, New Zealand 2002



Princes St & Lees St, Dunedin, New Zealand 2002



Princes St & Lees St, Dunedin, New Zealand 2002



Dunedin, New Zealand 2002



Dunedin, New Zealand 2002



Dunedin, New Zealand 2002



Dunedin, New Zealand 2002



Spotlight, Corner of Cumberland St & Jervois St, Dunedin, New Zealand - 2000



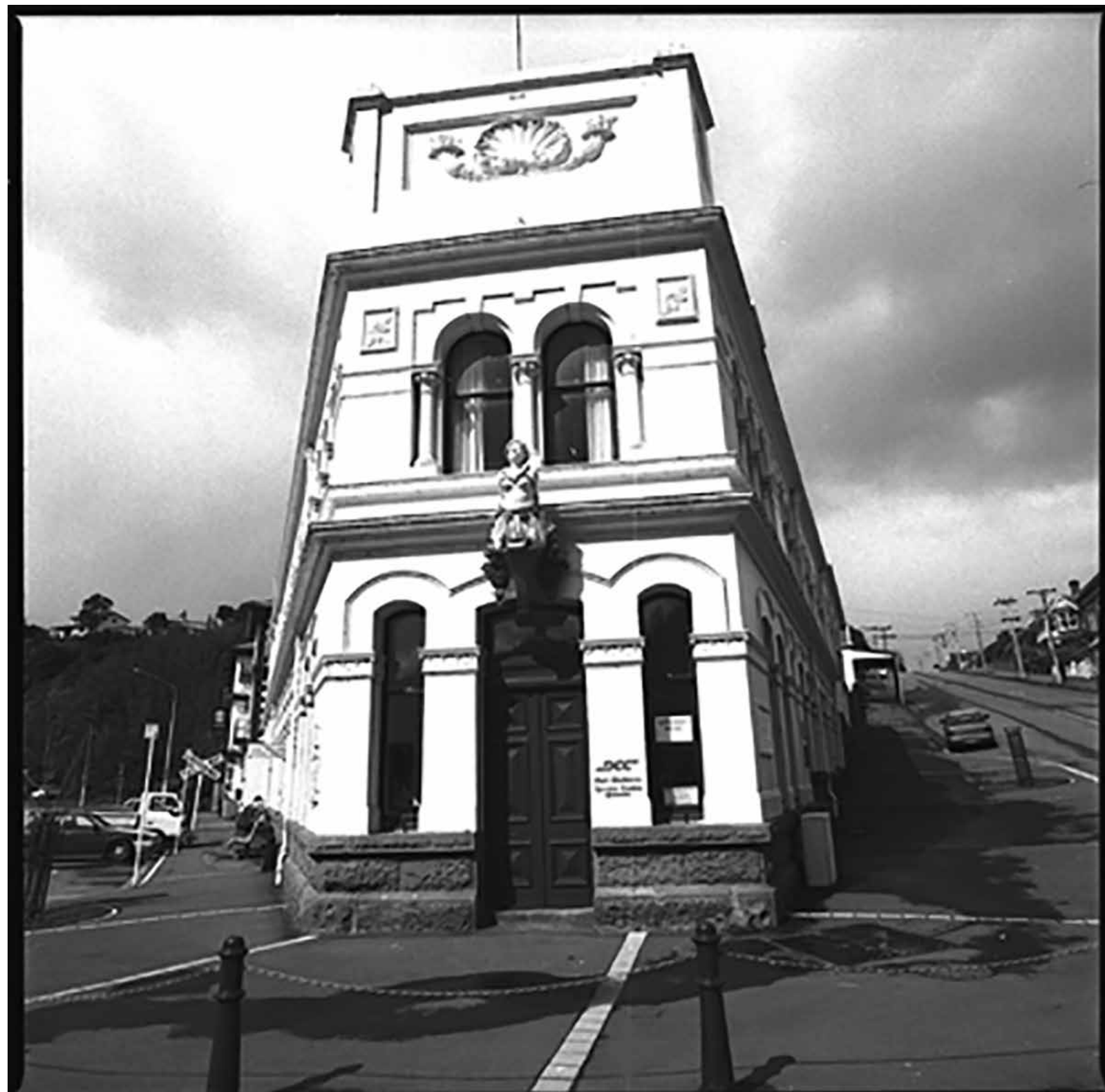
Corner of Anzac Ave & Hanover St, Dunedin, New Zealand - 2001



Corner of Felleul St and Cargill St , Dunedin, New Zealand - 2001



Corner of York Place and Smith St, Dunedin, New Zealand - 2001



Cr of Beach St and Grey St Port Chalmers, Dunedin, New Zealand - 2001



Corner of Mount and George St, Port Chalmers II, Dunedin, New Zealand 2001



Cr of Gery and George St, Ralph Hotere Studio, Port Chalmers, Dunedin 2001



Cr Mount and Beach St, Port Chalmers II, Dunedin 2001





Cnr North & Stafford St, Timaru, New Zealand 2002



Queens Hotel, Cr of Barnard Street and North St, Timaru, New Zealand 2002



Mascot Finance House, Cr Stafford St, Timaru, New Zealand 2002



Cr Beswick St & Stafford, Timaru, New Zealand 2002



The Bay Hill & St, Timaru, New Zealand 2002



Hydro Grand Hotel, Cr Stafford St, Timaru, New Zealand 2002



Timaru, New Zealand 2002



Cr Newham St, & Cr Evans St, Timaru, New Zealand 2002



Timaru, New Zealand 2002



ANZ Bank, Stafford St, Timaru, New Zealand 2002



H & J Smith, Gore, New Zealand 2002



Temuka, South Canterbury, New Zealand 2002



Temuka, South Canterbury, New Zealand 2002



Gore, New Zealand 2002



Lawrence, Otago, New Zealand 2002

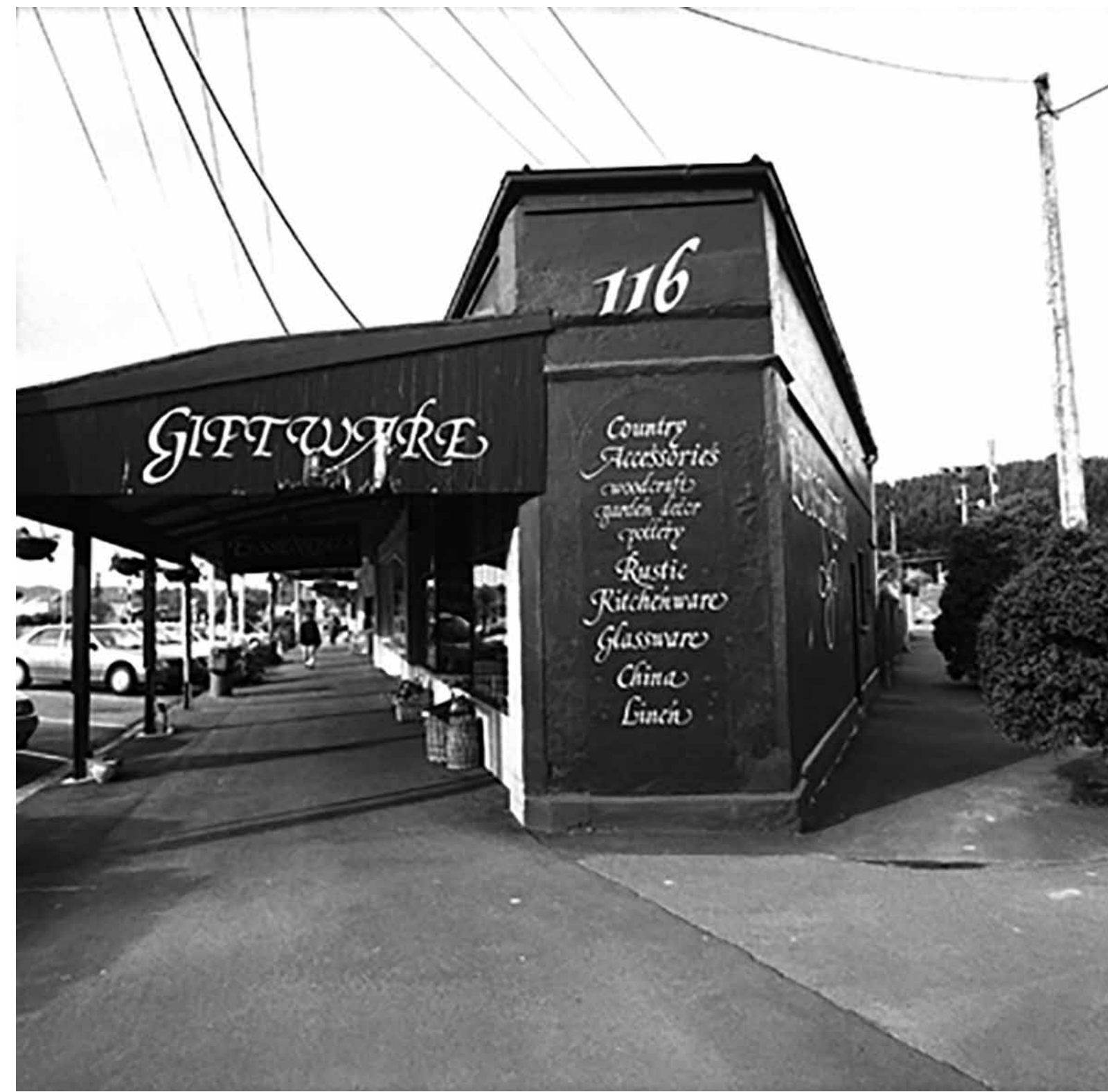


Roxbough, Otago, New Zealand, 2002





Palmerston, Otago, New Zealand 2001



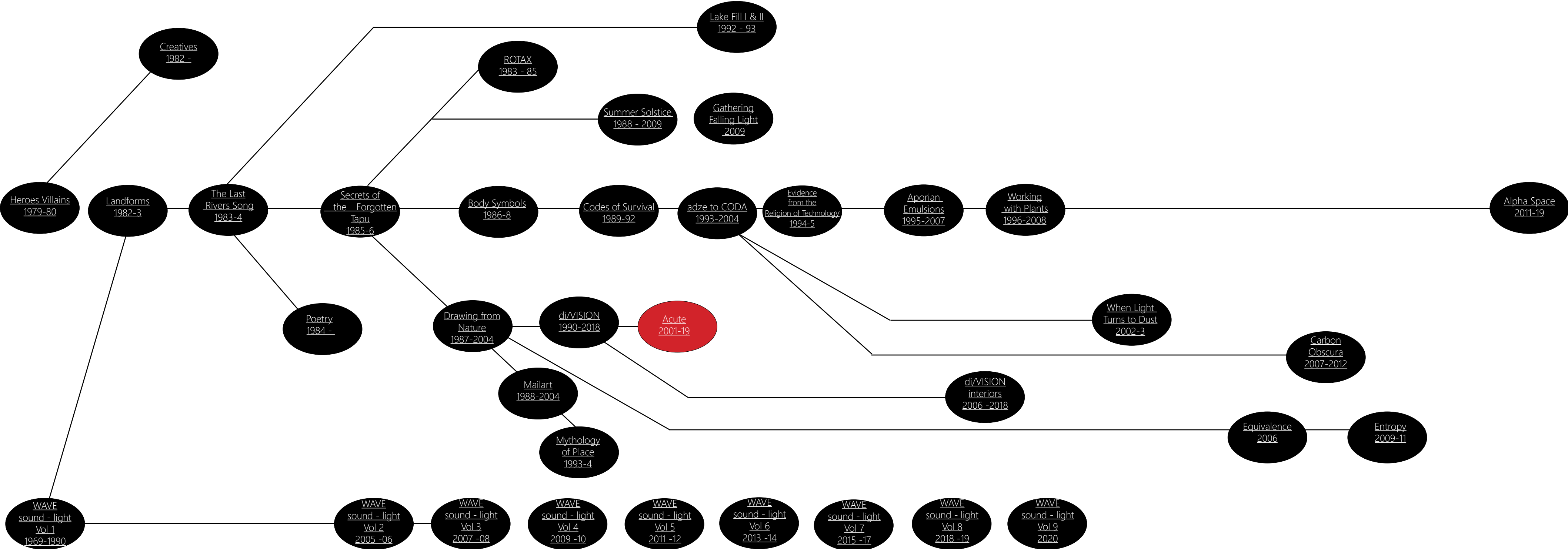
Palmerston, Otago, New Zealand 2001



Settlers Museum, Hight St, Castle St, Dunedin, New Zealand, 2013

# Lloyd Godman Project EPublications

gives free access to the large body of creative work by this artist. The schematic outlines the various projects and pinpoints where *Acute* sits within the oeuvre.



# E publications



## Tillandsimania \$30 Aust

This is a series of interactive PDFs and a work in progress which is updated annually. This means key words are linked to relevant information on other pages, so the document is easy to navigate and find information.

The 2020 version offers extensive information on Tillandsias or air plants and includes:

6 documents

Contents includes: Over 1500 pages Over 390 plant entries Over 1600 photographs Over 140 illustrations and renders Over 50 maps Over 100 sound files And 35- charts

It is rich in photographs and illustrations. The resolution of the images is high which allows enlargements to 300-400%, while the text can be enlarged even higher.

Email for more information. [lloydgodman@gmail.com](mailto:lloydgodman@gmail.com).



# Lloyd GODMAN projects

More than 30 of Lloyd Godman's art projects are now available as high resolution interactive PDFs. (over 6,000 pages. The complete package can be downloaded. The cost for the complete PROJECTS package is \$30 Aust

Email for more information. [lloydgodman@gmail.com](mailto:lloydgodman@gmail.com).